

Where is the solar inverter switch



Overview

A step by step guide for turning on, shutting down or restarting your inverter safely. Step 1: Locate your meterbox or switchboard and locate the "main switch inverter supply" and turn that to the ON position. (Some times there will be a DC. Welcome to Part 1 of our 'Master Your Solar Inverter' series! In this video, we'll guide you through everything you need to know to get started with your solar inverter. The voltage on a string is the number of modules multiplied by 1V, with a deviation of 10mV per module. As you might know, a solar inverter converts the direct current (DC) electricity generated by your solar panels into. A solar automatic transfer switch allows you to use a PV system alongside a backup power source.

Where is the solar inverter switch



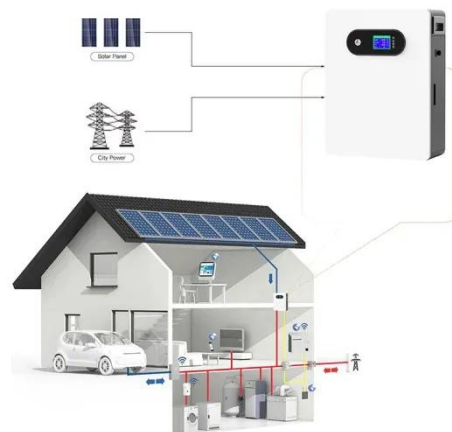
Turning on, shutting down or restarting your inverter safely

Safely turn on, shut down, or restart your solar inverter with this step-by-step guide. Ensure proper operation and troubleshoot issues.

[Learn More](#)

Solar inverter

A solar inverter or photovoltaic (PV) inverter is a type of power inverter which converts the variable direct current (DC) output of a photovoltaic solar panel into a utility frequency alternating current (AC) that ...



[Learn More](#)



A Complete Guide to Solar Automatic Transfer Switch

These solar transfer switches are typically mounted between the utility meter and the solar inverter. The switch will then monitor both sources, and connect to the alternate source whenever necessary - ...

[Learn More](#)

Solar Inverter Installation Guide , Pro Installer Protocols , Anern

Anern solar inverter installation guide for off-grid, hybrid, MPPT, low-frequency, and parallel inverter systems, covering safety, wiring, battery integration, commissioning, and maintenance to ensure safe ...



[Learn More](#)



A Guide to Solar Inverters: How They Work & How to Choose Them

This article explains what solar power inverters are, how they work, and the situations where they excel, along with why one type may not be a good fit for your project.

[Learn More](#)

Solar energy , Definition, Uses, Examples, Advantages, & Facts

Solar energy is radiation from the Sun that is capable of producing heat, causing chemical reactions, or generating electricity. The total amount of solar energy incident on Earth is ...



[Learn More](#)

How to switch off Inverter when not in use

This switch is usually found near the inverter and is used to cut off the electricity flowing from the inverter to your home or the grid. Flipping this

switch will stop the AC power from being sent ...

[Learn More](#)



Solar Energy - SEIA

Solar power is energy from the sun that is converted into thermal or electrical energy. Solar energy is the cleanest and most abundant renewable energy source available, and the U.S. has some of the

...

[Learn More](#)



Solar explained

People have used the sun's rays (solar radiation) for thousands of years for warmth and to dry meat, fruit, and grains. Over time, people developed technologies to collect solar energy for heat and to ...

[Learn More](#)

To lower electric bills, consumers quietly install DIY solar

Plug-in solar has remained in the shadows because of a lack of safety standards and often costly requirements imposed by utilities, but that's changing.

[Learn More](#)

Solar Energy

There are two main types of solar energy technologies--photovoltaics (PV) and concentrating solar-thermal power (CSP). On this page you'll find resources to learn what solar ...

[Learn More](#)

Master Your Solar Inverter : Switch On / Off Your Inverter (Part 1)

Welcome to Part 1 of our 'Master Your Solar Inverter' series! In this video, we'll guide you through everything you need to know to get started with your solar inverter.

[Learn More](#)

Solar Panels for Home in 2026 , Solar

Solar panels work through the photovoltaic (PV) effect. When sunlight hits the panels, it creates an electric current that is first used to power

electrical systems in your home.

[Learn More](#)



SOLAR , Stony Brook University

Need Help? If you are having problems logging into SOLAR, there are a number of self-help and support resources available to you:

[Learn More](#)



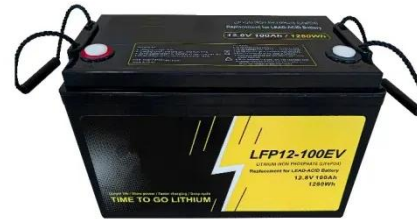
Quick Installation Guide North America MAN-01-00025-3

Terminate the first and last inverters in the chain by switching a termination DIP-switch inside the inverter to ON (move the left switch to the top). The switch is located on the communication board ...

[Learn More](#)

Solar & Battery Solutions , Generac

Generac Solar & Battery Solutions provide a more powerful, resilient and smart way to manage your energy needs.

[Learn More](#)

How to Safely Turn Off Your Solar Inverter

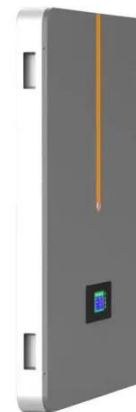


The first step in shutting down your solar inverter is to turn off the AC disconnect. This switch is usually located near the inverter and cuts off the alternating current (AC) from the inverter to ...

[Learn More](#)

Solar Inverters: Everything You Need To Know

Solar inverters are an essential part of a solar energy system. But what exactly do they do and does every solar system need one? In this simple guide for beginners, we look at the functions of a solar ...

[Learn More](#)

SOLAR , Division of Information Technology

Students use SOLAR to register for classes, print schedules, view and pay bills, update personal contact

information, view transcripts, and submit student employment timesheets.

[Learn More](#)



Contact Us

For catalog requests, pricing, or partnerships, please visit:
<https://www.v4venison.co.za>

