

What to do with all the batteries in the communication base stations



Overview

This article clarifies what communication batteries truly mean in the context of telecom base stations, why these applications have unique requirements, and which battery technologies are suitable for reliable operations. To ensure continuous operation during power outages or grid fluctuations, telecom operators deploy robust backup battery systems. However, the efficiency, reliability, and safety. Communication base station batteries are critical components that ensure uninterrupted service, especially in remote or challenging environments. With the global battery backup market projected to grow to USD 22. Typically using valve-regulated lead-acid (VRLA) or lithium-ion (Li-ion) batteries, they provide critical energy storage to maintain network reliability.

What to do with all the batteries in the communication base station



Communication Base Station Battery in the Real World: 5 Uses

The following sections explore the top use-cases, integration considerations, key players, and future outlooks for communication base station batteries in 2025.

[Learn More](#)

How to Select the Best ESTEL Battery Backup for Base Stations

Choose the best telecom battery backup systems by evaluating capacity, battery type, environmental adaptability, maintenance, and scalability for base stations.



[Learn More](#)



What Are the Key Considerations for Telecom Batteries in Base Stations?

Telecom batteries for base stations are backup power systems that ensure uninterrupted connectivity during grid outages. Typically using valve-regulated lead-acid (VRLA) or lithium-ion (Li-ion) batteries, they provide critical ...

[Learn More](#)

Understanding Backup Battery

Requirements for Telecom Base Stations

Telecom base stations require reliable backup power to ensure uninterrupted communication services. Selecting the right backup battery is crucial for network stability and efficiency.

[Learn More](#)



Lithium battery is the magic weapon for communication base station

Intelligent energy storage lithium battery can effectively protect the base station battery in the event of the accidental short circuit, lightning shock, and other conditions, timely start the protection system ...

[Learn More](#)

Communication Base Station Backup Battery

High-capacity energy storage solutions, specifically designed for communication base stations and weather stations, with strong weather resistance to ensure continuous operation of equipment in remote areas.

[Learn More](#)



Comprehensive Guide to Telecom Batteries

This comprehensive guide will delve into the types of telecom batteries, their



applications, maintenance tips, and the latest advancements in battery technology.

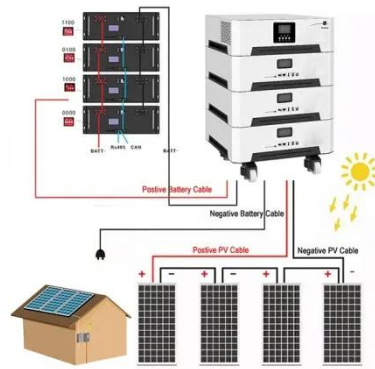
[Learn More](#)

Communication Batteries: Why Telecom Base Stations Have Unique

...

The phrase "communication batteries" is often applied broadly, sometimes including handheld radios, emergency devices, or general-purpose backup batteries. In practice, when network operators and ...

[Learn More](#)



Telecom Battery Backup System , Sunwoda Energy

A telecom battery backup system is a comprehensive portfolio of energy storage batteries used as backup power for base stations to ensure a reliable and stable power supply.

[Learn More](#)

Battery Management Systems for Telecom Base Backup Batteries

To ensure continuous operation during power outages or grid fluctuations,

telecom operators deploy robust backup battery systems. However, the efficiency, reliability, and safety of these battery ...

[Learn More](#)



Contact Us

For catalog requests, pricing, or partnerships, please visit:
<https://www.v4venison.co.za>

