

# Ultra-high steel structure photovoltaic support



## Overview

---

For specialized applications like carport solar structures, consider using high-strength steel (Grade 550) to support both panels and vehicle loads. Selecting the right solar photovoltaic support system steel involves balancing technical specifications, environmental factors, and. These systems — whose importance is often overshadowed by the solar panels they support — are critical to making sure panels placed on rooftops remain stable, functional, and long-lasting. Any material considered for a photovoltaic system roof-support structure is evaluated for its ability to bear. Here are the 10 most popular steel structure types for PV panel projects: Each Steel Structure for PV Panel project offers unique features, advantages, and ideal applications. The table below highlights recent global installation statistics for these mounting systems. Fixed tilt and flush roof. Parking garage, solar farm, ground mount, canopy, charging station, and more – we have the capability to design and fabricate elevated solar structures that meet your specific needs.

## Ultra-high steel structure photovoltaic support

---



### Solar Photovoltaic Support System Steel: Key Considerations for ...

This article explores how steel-based mounting solutions form the backbone of modern solar projects while addressing critical factors like material selection, design optimization, and cost-efficiency.

[Learn More](#)

---

### Optimizing steel structures for solar panels: integrating artificial

Steel structural systems play a pivotal role in supporting large-scale solar panel installations, and optimizing these structures is essential for maximizing energy output while ...



[Learn More](#)

---



### Steel Structures for Photovoltaic: Roof-Only Applications

Steel structures in photovoltaic systems serve as the backbone for rooftop solar installations. They are cost-effective and durable, and can function optimally with minimal ...

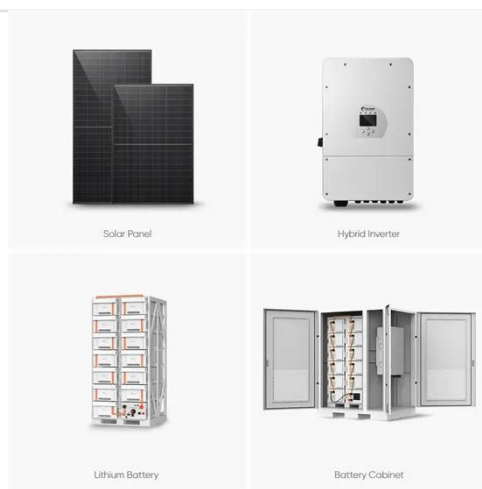
[Learn More](#)

---

## 10 Popular Steel Structure Designs for PV Panel Projects

Compare 10 steel structure designs for PV panel projects. Find the best Steel Structure for PV Panel based on cost, durability, and site needs.

[Learn More](#)



### Ultra-high steel structure photovoltaic support

This paper proposes a hydroelastic and structural analysis method for modular floating structures (MFS) constructed from fiber-reinforced polymer (FRP) reinforced ultra-high

[Learn More](#)

### Elevated Solar Structures , Custom Designed , CBC Steel Buildings

As a custom manufacturer, CBC Steel Buildings is able to design and manufacture steel structural systems to support solar panel installation projects for a variety of applications - offering maximum ...

[Learn More](#)



### Understanding Photovoltaic Bracket Steel Structures: Types, Materials

But what makes steel the go-to material for solar mounting systems? Let's break down the essential types, their unique



advantages, and how to choose the right one for your project.

[Learn More](#)

---

### Design and Installation of 500-kW Floating Photovoltaic ...

A structure composed of high-durability steel with excellent corrosion resistance and durability was designed for constructing and installing a 500-kW-class floating photovoltaic power generation ...

[Learn More](#)



IP65/IP55 OUTDOOR CABINET

WATERPROOF OUTDOOR CABINET

42U/27U

OUTDOOR BATTERY CABINET

### Photovoltaic Power Generation

The ability to combine solar energy generation with the structural integrity of steel space frames makes this design a future-proof and cost-effective choice for new buildings.

[Learn More](#)

---

## Contact Us

For catalog requests, pricing, or partnerships, please visit:  
<https://www.v4venison.co.za>

