

The yellow light of the solar inverter flashes for a long time



Overview

Flashing yellow during the day means inverter is working outside of its normal operating conditions, this usually indicates a non critical error. It may be picking up on issues such as the grid voltage is temporarily too high or too low. Any combination of LEDs on. This document provides a concise guide for understanding the status lights on your SolarEdge inverter. Power Inverters are designed to convert direct current (DC) from a battery or a solar panel array to alternating current (AC) in AC-powered applications. Waiting for feed-in conditions The conditions for feed-in operation are not yet met. I've turned the system on and off many times, but the issue keeps returning. It is never showing as solid green.

The yellow light of the solar inverter flashes for a long time



- ✓ 50KW/100KWH
- ✓ HIGHER POWER OUTPUT IN OFF-GRID MODE
- ✓ CONVENIENT OPERATION & MAINTENANCE
- ✓ PRE-WIRED

What Does The Fault Light Mean On A Power Inverter?

Do I Need to Clean My Solar Panels? How Do I Maintain My Solar Panels? Do Solar Panels Need to Be serviced? Solar panels have no moving parts and are thus basically maintenance-free! They do not need to be serviced at all, other than occasional cleaning. Inverters and batteries are arguably the most vulnerable part of your solar system and will need to be serviced or replaced every decade. See more on solvoltaics sma-service

Explanation of the LED Signals of Inverters

LED signals indicate the operating state of SMA inverters. The following table contains an overview of the LED signals of SMA inverters and their explanations. Waiting for feed-in conditions The ...

[Learn More](#)

Solis Inverter Alarm Codes (Complete List)

In this article, we will provide a comprehensive explanation for all messages generated by Solis inverters, ranging from operating messages to alarm messages. We'll not only decipher what ...

[Learn More](#)

What Does The Fault Light Mean On A Power Inverter?

The cost of a solar array or a battery bank will far exceed the cost of the inverter, and thus the inverter is seen as the sacrificial component in the system. Inverters will typically last about ...

[Learn More](#)

SolarEdge Inverter Status Light Guide

This document provides a concise guide for understanding the status lights on your SolarEdge inverter. Monitoring these lights helps ensure your solar energy system is functioning ...

[Learn More](#)

Tesla Solar Panel Blinking Yellow & Red? Troubleshooting Help

Yellow and red blinking lights on a Tesla solar board typically signal inverter or communication faults. First, power cycle the system by turning it off for several

minutes, then back on.

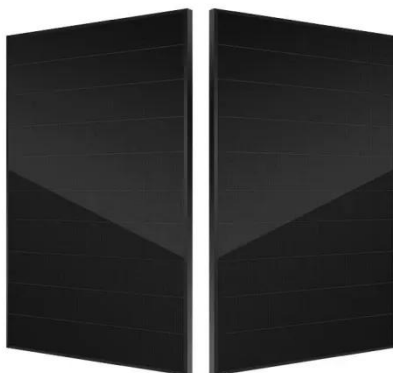
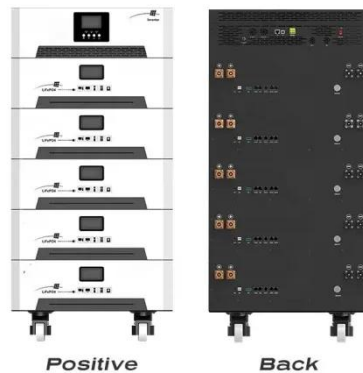
[Learn More](#)



Multiplus ESS LED Meanings and Overload Issues

In apparently normal operation: The yellow bulk light stays on constantly - no flashing. The green "Inverter On" LED flashes as one would expect - when the inverter is running in power ...

[Learn More](#)



SolarEdge Inverter Troubleshooting

Learn how to read common inverter LED indications to make sure your system is running properly. Every Stateline Solar installation comes equipped with a SolarEdge gateway.

[Learn More](#)

Inverter Status and System Performance Indications

Your inverter has a switch and three colored LEDs that indicate system information, such as errors or performance. The following tables detail

the possible LED and switch combinations, and what they ...

[Learn More](#)



Explanation of the LED Signals of Inverters

LED signals indicate the operating state of SMA inverters. The following table contains an overview of the LED signals of SMA inverters and their explanations. Waiting for feed-in conditions The ...

[Learn More](#)

Inverter Fault Light Solved

The inverter fault light comes on for various reasons. Learn the causes and what you have to do to fix this issue.

[Learn More](#)



What do the lights on my Fronius Gen24 inverter mean?

Flashing green indicates the inverter is starting up, usually takes about two minutes. Yellow light when the Sun is up and grid power is on indicates a

problem, check inverter switches, check monitoring for ...

[Learn More](#)



Contact Us

For catalog requests, pricing, or partnerships, please visit:
<https://www.v4venison.co.za>

