

The standard electrolyte for flow batteries is



Overview

A flow battery, or redox flow battery (after), is a type of where is provided by two chemical components in liquids that are pumped through the system on separate sides of a membrane. inside the cell (accompanied by current flow through an external circuit) occurs across the membrane while the liquids circulate in their respective spaces.

The standard electrolyte for flow batteries is



Standard: Definition, Meaning, and Examples

The term "standard" is central to defining benchmarks and norms across countless areas, from education and industry to culture and communication. Its significance lies in fostering quality, ...

[Learn More](#)

Flow battery

The fundamental difference between conventional and flow batteries is that energy is stored in the electrode material in conventional batteries, while in flow batteries it is stored in the electrolyte.



[Learn More](#)



Electrochemistry Encyclopedia Flow batteries

True flow batteries have all the reactants and products of the electro-active chemicals stored external to the power conversion device. Systems in which all the electro-active materials are dissolved in a ...

[Learn More](#)

STANDARD Definition & Meaning

standard, criterion, gauge, yardstick, touchstone mean a means of determining what a thing should be. standard applies to any definite rule, principle, or measure established by authority.

[Learn More](#)



The Standard

Would you like to use online chat for assistance with your User ID/password?

[Learn More](#)

STANDARD Definition & Meaning , Dictionary

A standard is an authoritative principle or rule that usually implies a model or pattern for guidance, by comparison with which the quantity, excellence, correctness, etc., of other things may be determined: ...

[Learn More](#)



SECTION 5: FLOW BATTERIES

Each half-cell contains an electrode and an electrolyte. Positive half-cell: cathode and catholyte. Negative half-cell: anode and anolyte. Redox reactions

occur in each half-cell to produce or consume electrons ...

[Learn More](#)



Electrochemistry Encyclopedia Flow batteries

Flow Battery Classifications Advantages and Disadvantages Future Directions Bibliography Most redox flow batteries consist of two separate electrolytes, one storing the electro-active materials for the negative electrode reactions and the other for the positive electrode reactions. (To prevent confusion, the negative electrode is the anode and the positive electrode is the cathode during discharge. It is to be noted that these names will See more on knowledge.electrochem



Searches you might like

ecoflow batteries battery electrolyte flow battery battery fluid flow batteries europe

What you need to know about flow batteries

In most flow batteries we find two liquified electrolytes (solutions) which flow and cycle through the area where the energy conversion takes place. This

...

[Learn More](#)



What Are the Most Common Electrolyte Materials Used in Flow ...

The most common and commercially developed electrolyte for flow batteries is based on vanadium. Vanadium redox flow batteries (VRFBs) use vanadium ions in four different oxidation ...

[Learn More](#)

STANDARD , definition in the Cambridge English Dictionary

A standard language is a variety of language that is used by governments, in the media, in schools and for international communication. There are different standard varieties of English in the world, such ...



[Learn More](#)

Flow Batteries , Liquid Electrolytes & Energy Storage

The basic components of a flow battery include two tanks filled with electrolytes, which are liquids infused with materials that undergo reduction and oxidation (redox) reactions.

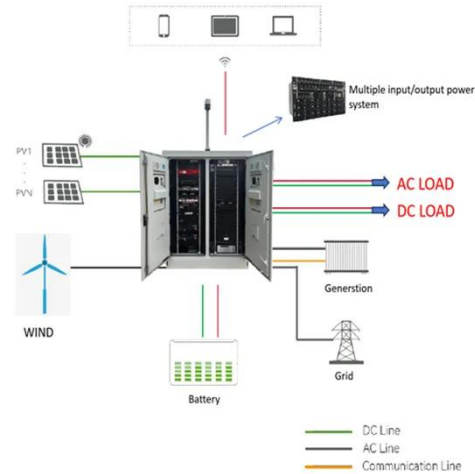
[Learn More](#)

What you need to know about flow batteries



In most flow batteries we find two liquified electrolytes (solutions) which flow and cycle through the area where the energy conversion takes place. This electrolyte is not housed inside this "battery body" ...

[Learn More](#)



Technology: Flow Battery

Due to their comparably high energy density, the most common and technically mature flow batteries use vanadium compounds as their electrolytes. These also bring the advantage that such systems ...

[Learn More](#)

What Is a Flow Battery and How Does It Work?

Several chemical formulations are used in flow batteries, with the choice affecting performance, cost, and operating temperature range. The Vanadium Redox Flow Battery (VRFB) is ...

[Learn More](#)



Flow battery

OverviewHistoryDesignEvaluationTraditi
onal flow batteriesHybridOrganicOther
types



A flow battery, or redox flow battery (after reduction-oxidation), is a type of electrochemical cell where chemical energy is provided by two chemical components dissolved in liquids that are pumped through the system on separate sides of a membrane. Ion transfer inside the cell (accompanied by current flow through an external circuit) occurs across the membrane while the liquids circulate in their respective spaces.

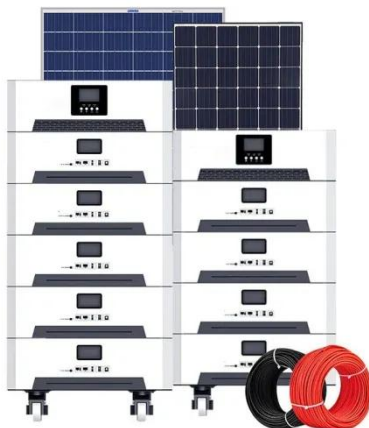
[Learn More](#)

STANDARD definition in American English , Collins English Dictionary

A standard is a level of quality or achievement, especially a level that is thought to be acceptable. The standard of professional cricket has never been lower.



[Learn More](#)



Log In , The Standard

The Standard is a marketing name for Standard Insurance Company (Portland, Oregon), licensed in all states except New York, and The Standard Life Insurance Company of New York (White Plains, New ...

[Learn More](#)

The Standard

We provide insurance, retirement and investment products and services. Work with our team of remarkable people

united by compassion and a genuine desire to help others.

[Learn More](#)



Global electrolyte standard 'crucial for scalability and ...

Global standards and specifications for the electrolyte used in vanadium redox flow batteries are "crucial" for the technology's prospects.

[Learn More](#)

Contact Us

For catalog requests, pricing, or partnerships, please visit:
<https://www.v4venison.co.za>

