

# The importance of wind power lightning protection for communication base stations



## Overview

---

Lightning protection and grounding systems provide a controlled discharge path, safely guiding lightning current into the earth before it can damage sensitive equipment. 112 provides a set of practical procedures related to the lightning protection, earthing and bonding of radio base stations (RBSs). Base Station. The lightning strike is a type of surge voltage Insufficient assessment of lightning strike risk (1) Assessment of lightning strike risk - Complex evaluation process according to IEC61662 - Historical basis - statistics on thunderstorm days - Terrain survey - risk coefficient - Lightning attraction. How should a lightning protection System (RBS) be formed?

The earthing network of an RBS should be formed by a ring loop surrounding the tower, equipment room and fence, at a minimum. Many communications facilities have large towers for mounting of antennas.

## The importance of wind power lightning protection for communication

---

**LFP12V100**



### How Are Base Stations Protected Against Lightning?

In base station lightning protection design, the grounding grid and ground busbars are key components. With proper design, they can effectively reduce the impact of lightning on the station.

[Learn More](#)

---

### Lightning and Surge Protection for Communication Station

Install lightning rods, grounding, surge protectors, shielding, and follow standards for effective communication station protection.

[Learn More](#)

#### INTEGRATED DESIGN

EASY TO TRANSPORT AND INSTALL,  
FLEXIBLE DEPLOYMENT



### Communication Network GSM-Base Stations and Lightning Effect

While the cross-section and material of the conductors used in this system vary according to the magnitude and frequency of lightning, the surface protection of the conductors is critical for ...

[Learn More](#)

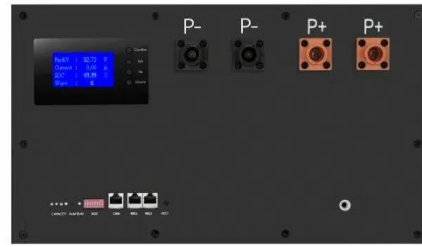
---

## Lightning Trends and Protection

## Solutions in Wind Energy Systems

This report captures the accumulated and consolidated expertise of Polytech's lightning team from the past 20 years and provides an up-to-date overview of lightning protection for wind turbines.

[Learn More](#)



## How to Safeguard Mobile Base Stations from Lightning?

A single lightning strike can damage critical telecom equipment, interrupt network services, and even endanger maintenance personnel. As the first line of defense, outdoor telecom cabinets play a ...

[Learn More](#)

## Lightning Protection for Communications Facilities

Obviously these towers can be a lightning target in many parts of the country, and should be protected to the greatest degree feasible. In the case histories that follow, towers are typically ...

[Learn More](#)



## Regulations on lightning protection and grounding of wind power ...

This paper provides comprehensive analysis on the lightning protection



scenarios in 48 communication and broadcasting towers situated in similar isokeraunic contours in Sri Lanka

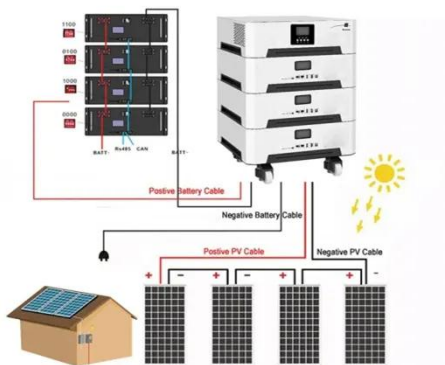
[Learn More](#)

**ITU-T Rec. K.112 (07/2019)  
Lightning protection, earthing and ...**

The purpose of this Recommendation is to give detailed guidance on protection procedures, so that an engineer who is not a lightning protection expert can accomplish the design of the lightning ...



[Learn More](#)



**Lightning introduction pathways and protection measures for**

The overhead pipelines of mobile communication system base stations are an important channel for introducing lightning damage. When thunderclouds discharge, a strong electric field is formed in their ...

[Learn More](#)

**Do communication base stations and wind power plants use lightning**

Why do you need a lightning shielding

system?Although lightning shielding systems cannot guarantee complete safety from strikes, the presence of a comprehensive solution for lightning and surge ...

[Learn More](#)



---

## Contact Us

---

For catalog requests, pricing, or partnerships, please visit:  
<https://www.v4venison.co.za>

