

The generator is not connected to the exhaust shaft



Overview

To fix a generator not producing power, you'll need to use the volt generator battery method: unplug the two wires connecting to the generator brushes, connect one of those to the ground battery terminal, and plug in a light. This article highlights some of the most common field challenges encountered when installing industrial generator exhaust systems, and the steps a design team can take to prevent costly mistakes, compliance issues, or performance failures. Engine room layouts may not offer ideal pathways for. The rain cap is attached to the end of the pipe and opens due to the pressure from the exhaust discharge force. Use of a spark arrestor is required by the U. Department of Forestry if located on. The exhaust system in your generator helps get rid of harmful gases, keeps the engine cool, and makes sure your generator is running as efficiently as possible. But when something goes wrong with the exhaust, it can affect with the whole system. Worse, non-compliance with EPA or NFPA codes can result in fines, safety violations, or project delays.

The generator is not connected to the exhaust shaft



Avoid These Mistakes in Generator Exhaust System Installations

This article highlights some of the most common field challenges encountered when installing industrial generator exhaust systems, and the steps a design team can take to prevent ...

[Learn More](#)

The generator is not connected to the exhaust shaft

The free shaft i.e. the power turbine is not connected mechanically to the gas generator spool and can turn at independent speeds or even independent directions from the gas generator spool.



[Learn More](#)



What to Know Before Installing a Commercial Generator Exhaust System

In this article, we'll break down how generator exhaust systems work, common design challenges, material choices, code considerations (especially for through-wall exhaust setups), and what to ...

[Learn More](#)

Running Generator in Garage With Exhaust Hose

An exhaust hose serves as a conduit to channel toxic fumes from the generator's exhaust outlet to the outdoors. This method aims to prevent accumulation of dangerous gases inside ...

[Learn More](#)



GENERIC GENERATOR INSTALLATION MANUAL

Exhaust piping must be terminated safely outside a structure that houses a generator, in such a way that hot gases and sparks will be discharged harmlessly and will not blow against any combustible ...

[Learn More](#)

Why Is My Generator Not Working? A Troubleshooting Guide

A systematic DIY guide to troubleshoot generator failures, covering simple checks, engine mechanics, and electrical output problems safely.

[Learn More](#)



How to diagnose generator exhaust issues

Learn how to diagnose generator exhaust issues with our guide to identify

problems, ensure proper function, and maintain safe operation.

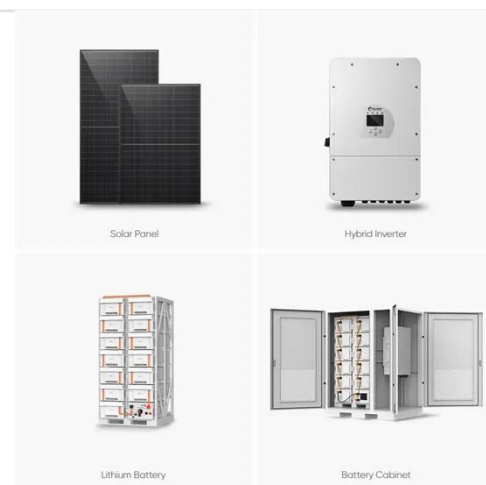
[Learn More](#)



The ultimate solution for maintaining your nationwide generator ...

Correct installation of the exhaust is also crucial to ensuring full performance of the engine. This info sheet is a guide and discusses the issues to be addressed when installing a generator set's exhaust ...

[Learn More](#)



Diesel Generator Exhaust Pipe Installation Requirements

All indoor generator sets must discharge exhaust gas outdoors through non-leaking exhaust pipes. The installation of exhaust pipes must comply with relevant specifications, standards, ...

[Learn More](#)

Generator Exhaust Systems

Generator exhaust systems need to be properly designed to ensure correct engine performance and safe operation.

System design has become more complex with the desire to keep emissions low, ...

[Learn More](#)



Contact Us

For catalog requests, pricing, or partnerships, please visit:
<https://www.v4venison.co.za>

