

Swaziland 9W solar panel size



Overview

Most residential solar panels are 1.7 m²), with a maximum power output of around 330W. Solar panels also come with 72 solar cells, which are larger to accommodate the additional cells. Alright, your roof square footage is 1000 sq ft. Can you put a 5kW solar system on your roof?

For that, you will need to know what size is a typical 100-watt solar panel, right?

To bridge that gap of very useful knowledge needed. Using a solar panel size chart can help you choose the best types of solar panels for your home or application. At 40-46 pounds, they can be safely handled by. Let's cut through the technical jargon - here's what actually determines panel sizes: 1. Silicon Wafer Evolution The shift from 156mm to 210mm silicon wafers has been like upgrading from compact cars to SUVs. However, the exact dimensions depend heavily on the panel's technology, wattage, and the manufacturer's design.

Swaziland 9W solar panel size



Photovoltaic panel size and power comparison table

solar PV panel sizes by their average cost range. Keep in mind that these are the sizes and price a size of 2m x 1m & 1.6m x 1m respectively. Comparison of Types of

[Learn More](#)

Power Size Standards for Photovoltaic Panels: What You Need to Know

Summary: This guide explains the importance of standardized power sizes for solar panels, explores current industry trends, and provides actionable insights for residential and commercial installations. ...

[Learn More](#)



Swaziland Photovoltaic Panel Manufacturer Contact: Your Gateway to

Connect with trusted Swaziland photovoltaic panel manufacturers who speak your language - both literally and technically. Get personalized quotes within 24 hours when you contact our team.

[Learn More](#)



SOLAR PANEL SIZES AND WATTAGE SIZING DIMENSIONS

Commercial solar panels tend to be about a foot longer than residential solar panels at 6.5 feet by 3 feet and can weigh 50 pounds or more. The exact size of residential and commercial solar panels ...

[Learn More](#)



Standard Solar Panel Sizes And Wattages (100W-500W Dimensions)

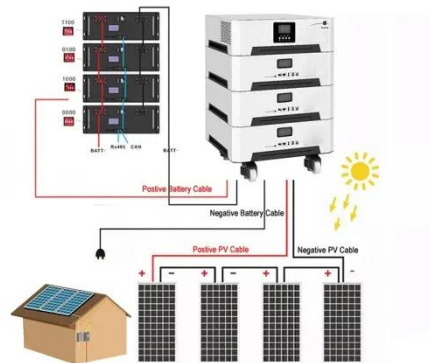
The goal here is to get to the average solar panel size by wattage. You can find typical dimensions of 100W, 150W, 170W, 200W, 200W, 220W, 300W, 350W, 400W, and 500W solar panels summarized ...

[Learn More](#)

The Ultimate Guide to Solar Panel Size, Weight & Wattage (2025)

Find the exact solar panel size & weight in our 2025 guide. Our complete chart compares models by ft/cm and lbs/kg to help you plan your installation.

[Learn More](#)



Solar panel sizes chart

Based on FMB's best solar panels, the average solar panel dimensions in the UK are: Solar panel size: 1,945.5mm

(length) x 1,130.1mm (width) x 31.25mm (height) Weight: 23.6kg While there isn't much ...



[Learn More](#)

Solar Panel Size & Dimensions Guide 2025 , Complete Specs

In this comprehensive guide, you'll learn everything you need to know about solar panel sizing, from standard dimensions to weight considerations, helping you determine the perfect solar ...

[Learn More](#)



Solar Panel Size and Wattage Chart: Standard Sizes & Uses for Each

Using a solar panel size chart can help you choose the best types of solar panels for your home or application. Because the size of a standard solar panel can vary, a chart that outlines the ...

[Learn More](#)

Solar Panels Size & Weight (Including Commercial Dimensions)

Check out this full guide on solar panels size, weight, and other characteristics, including a comparison between

Residential and Commercial panels.

[Learn More](#)



Contact Us

For catalog requests, pricing, or partnerships, please visit:
<https://www.v4venison.co.za>

