

Solar photovoltaic panel line



Overview

A single-line diagram, often abbreviated as SLD, is a simplified schematic that uses single lines and standardized symbols to represent the electrical distribution path of a PV system. In this configuration, the meter is physically separated from the main breaker which exposes conductors on the line side that can be accessed. This gives us a lot of options for solar interconnection methods. This diagram is the electrical roadmap of your photovoltaic installation, providing a clear, concise overview of the entire system for the Authority Having Jurisdiction (AHJ). Connecting solar photovoltaic panel lines requires careful attention to detail and a systematic approach. Utilize appropriate connectors to ensure a secure fit.

Solar photovoltaic panel line



SAMPLE PV: One-line Diagram (Residential/Small Commercial)

2013 National Grid - This sample one-line diagram is only a possible representation of a typical solar photovoltaic generating system connected to the National Grid electric power system.

[Learn More](#)

How to Create a Single-Line Diagram for a PV System ...

A practical guide for creating a clear and compliant single-line diagram (SLD) for a solar PV system, a critical component for permitting and installation.

[Learn More](#)



Grid tied solar , Free single line diagram template

Start with this template when setting up a grid-tied photovoltaic (PV) system. This template is in the style of the CPUC simplified single line diagram. Be sure to add labels and details as required by your AHJ ...

[Learn More](#)

Line Side Tap vs. Load Side Tap:

Everything You Need To Know

Don't miss out on this comprehensive guide to line side tap vs load side tap. Learn the pros, cons and differences, and get professional advice now!

[Learn More](#)



Complete Guide To PV System Components: Essential Solar Parts

...

Comprehensive guide to photovoltaic system components including solar panels, inverters, batteries, and mounting systems. Expert insights, costs, and selection tips.

[Learn More](#)

Solar Panel Wiring Guide: How to Connect Solar Panels

Solar panel wiring guide covering how to connect solar panels in series or parallel for optimal solar panel connection and output.

[Learn More](#)

Product Details



Solar Interconnection Methods (Full Guide)

Interconnecting a Solar PV system is more intricate than it might initially appear, given the diverse service

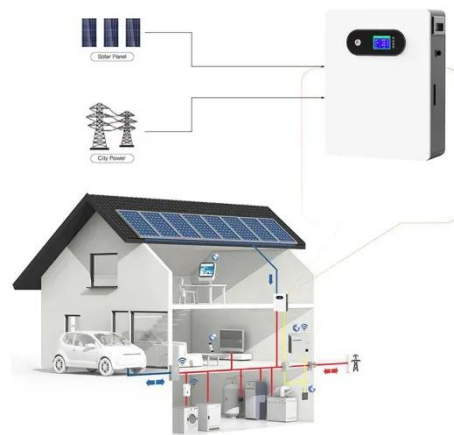


configurations in play. This article aims to provide clarity on the subject.

[Learn More](#)

How to connect a PV solar system to the utility grid

There are two basic approaches to connecting a grid-tied solar panel system, as shown in the wiring diagrams below. The most common is a "LOAD SIDE" connection, made AFTER the main breaker. ...



[Learn More](#)



How to connect solar photovoltaic panel lines , NenPower

Contextualizing the procedure for connecting solar photovoltaic panel lines unveils both its intricacies and essential practices. From comprehensively grasping wiring configurations to ...

[Learn More](#)

Solar Interconnection Methods (Full Guide)

Don't miss out on this comprehensive guide to line side tap vs load side tap. Learn the pros, cons and differences,

and get professional advice now!

[Learn More](#)



Solar panel wiring basics: How to wire solar panels

Discover all the solar panel wiring basics from terms, to sequence of operations, you'll discover everything you need to know to wire solar panels.

[Learn More](#)

Contact Us

For catalog requests, pricing, or partnerships, please visit:
<https://www.v4venison.co.za>

