

Solar glass and soda-lime-silica glass



Overview

Soda-lime glass, also called soda-lime-silica glass, is the transparent glass used for windowpanes and glass containers (bottles and jars) for beverages, food, and some commodity items. It is the most prevalent type of glass made. Some glass bakeware is made of soda-lime glass, as opposed to the more common and heat-tolerant borosilicate glass. Soda-lime glass accounts for a. ProductionThe manufacturing process for soda-lime glass consists in melting the raw materials, which are the, (Na₂. Soda-lime glass is divided technically into glass used for windows, called, and glass for containers, called . The two types differ in the application, production method (for. Soda-lime glass is relatively inexpensive, chemically stable, reasonably hard, and extremely workable. Because it can be resoftened and remelted numerous times, it is ideal for . It is used in preference.

Solar glass and soda-lime-silica glass



Silicate Glasses - soda-lime, germanosilicate, borosilicate

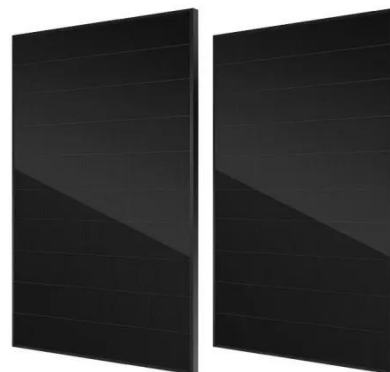
They largely consist of silicon dioxide (silica, SiO₂), but in contrast to pure silica glass (fused silica) they contain some additional substances like soda, alumina, phosphorus pentoxide, germania and ...

[Learn More](#)

Soda-lime glass , Manufacturing, Properties, Uses

It is composed of about 70 percent silica (silicon dioxide), 15 percent soda ...

[Learn More](#)



Physical and chemical properties of soda-lime-silica glass [23].

Several factors, including incentives associated with aesthetics, transparency, high chemical, and mechanical durability, and its excellent corrosion resistance, have rapidly accelerated the

[Learn More](#)

Soda-lime glass , Manufacturing,

Properties, Uses , Britannica

It is composed of about 70 percent silica (silicon dioxide), 15 percent soda (sodium oxide), and 9 percent lime (calcium oxide), with much smaller amounts of various other compounds.

[Learn More](#)



Soda-lime glass

Soda-lime glass, also called soda-lime-silica glass, is the transparent glass used for windowpanes and glass containers (bottles and jars) for beverages, food, and some commodity items.

[Learn More](#)

Soda-Lime Glass

Differences in activity between columns prepared from different glasses (e.g. soda lime glass, borosilicate glass, quartz, and fused silica) can be attributed to the chemical composition of the ...

[Learn More](#)



A survey of commercial soda-lime-silica glass compositions: Trends ...

In this study, we employ PCA to conduct dimensionality reduction and classification of glass composition. First, we consider each component present in

the collected glass samples as a ...

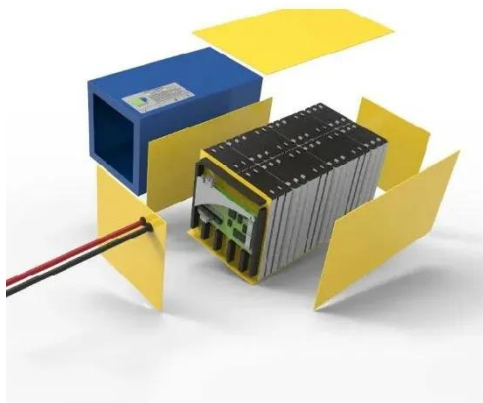
[Learn More](#)



Front and Back Glass Preparation for Solar Modules

While both are usually made of soda-lime silica glass, their preparation involves different coatings and treatments. 1.

[Learn More](#)



Soda-Lime Glass: Its Uses And Applications , CySoda

Its light transmission properties, low melting temperature, and ability to be recycled make it suitable for a wide range of applications, including windowpanes, bottles, jars, drinking glasses, ...

[Learn More](#)

Soda-Lime-Silica Glass

Soda lime silica glass is defined as the most common type of glass, which consists of silica combined with the oxides of calcium and sodium. It is

notable for its visible transparency, low cost, and ability to ...

[Learn More](#)



GLASS MANUFACTURING - ANSAC

Silica (sand) is the glass forming oxide, lime provides chemical stability and soda ash acts as the fluxing agent. Soda ash plays a vital role by reducing the furnace temperature necessary to melt the silica

...

[Learn More](#)

Contact Us

For catalog requests, pricing, or partnerships, please visit:
<https://www.v4venison.co.za>

