

Size standards for home photovoltaic panels



Overview

The standard residential solar photovoltaic panel size you'll see most often is based on a 60-cell configuration, typically measuring about 67 inches long by 40 inches wide. This size offers the best balance between power output, handling ease, and fitting standard roof dimensions. A 400W panel has the same physical footprint whether it produces 350W or 450W – the difference lies in cell. Solar panels have become the cornerstone of residential clean energy, with standard sizes designed to balance power output and installation practicality. However, panels with cell counts of 96, 120, and 144 may have different sizes. This guide explores the standard sizes of solar panels, factors influencing their dimensions, and. This guide puts those numbers front and center, from the standard solar panel size that fills most rooftops to the solar panel size chart that shows how watts grow with each extra cell. Typically, a commercial solar panel is 6.

Size standards for home photovoltaic panels



standard solar photovoltaic panel sizes explained

Discover standard solar photovoltaic panel sizes. Choose the perfect fit for your installation with our expert guide. Learn more today!

[Learn More](#)

Solar Panel Size Guide: Choose the Right Panel for Your Home

Learn how to choose the right solar panel size for your home. Explore standard dimensions, wattage charts, and tips for optimal rooftop systems.

[Learn More](#)



Detailed Guide to Solar Panel Size & Dimensions

Choosing the proper system is not only about the solar panel dimensions. You should also consider wattage, number of cells, layout possibilities, and energy consumption. Also, your ...

[Learn More](#)



Solar Panel System Sizing Guide , Calculate Perfect Home System Size

Getting the right solar panel system sizing is crucial for maximizing your investment and ensuring optimal energy production. Whether you're a first-time solar buyer or upgrading an existing system, ...

[Learn More](#)



Perfect Solar Panel Sizes for Your Home (Expert Sizing Guide)

A typical residential solar panel measures about 65 inches by 39 inches (roughly 5.4 feet by 3.25 feet), though slight variations exist between manufacturers. These standard dimensions ...

[Learn More](#)

What Are the Common Solar Panel Sizes?

Still, most 60-cell solar panels have a size of 39" X 66" and most 72-cell solar panels have sizes of around 39" X 77". However, panels with cell counts of 96, 120, and 144 may have different ...

[Learn More](#)



Solar Panel Size Guide , Best Panel Size for Your Roof

When people talk about a standard solar panel size, they usually mean the typical dimensions found in the industry. Solar

cells are assembled in grids, and the most common ...

[Learn More](#)



Solar Panel Size: 2026 Detailed Guide

In this article, we will discuss all the important aspects of solar panel size. This guide will help you select the right solar panel size through detailed calculations.

[Learn More](#)



Solar Panel Size & Dimensions Guide 2025 , Complete Specs

In this comprehensive guide, you'll learn everything you need to know about solar panel sizing, from standard dimensions to weight considerations, helping you determine the perfect solar ...

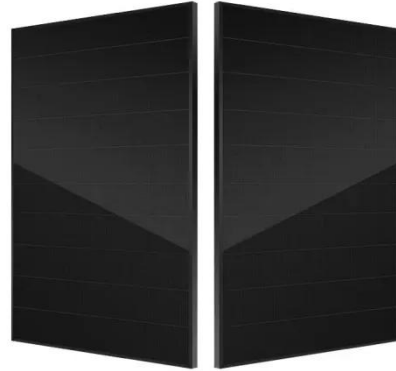
[Learn More](#)

Understanding Photovoltaic Panel Sizes - What You Need to Know ...

When planning a solar installation for your home, RV, or off-grid cabin, one of the most important decisions you'll make is choosing the right photovoltaic panel

sizes. The size of a solar ...

[Learn More](#)



Contact Us

For catalog requests, pricing, or partnerships, please visit:
<https://www.v4venison.co.za>

