

# Quectel 5G Base Station



## Quectel 5G Base Station



### Quectel RG255C-GL can't connect to private network 5G SA

We are having problems with the modem Quectel RG255C-GL to connect it to a private 5G SA network. Connecting to a commercial 4G/LTE works without any problems. With the same ...

[Learn More](#)

### How to set QMI mode by default?

Using standard driver won't work, because with standard driver (qmi\_wwan.ko) my modem EM05 is not getting registered, whereas with quectel provided driver qmi\_wwan\_q.ko it works.

[Learn More](#)



### Quectel 5G Module (RM502Q-AE)

An industrial grade 5G module for IoT/eMBB applications, ...

[Learn More](#)

### QuecOpen® Module SDK

This topic is intended to answer some of your questions regarding SDK of Quectel's QuecOpen solution enabled modules. Please read thoroughly before you post a SDK request of a ...

[Learn More](#)



### Latest topics

Dear customer, Thank you for your support of Quectel products. In order to be more convenient for you to get new standard firmware, we would like to recommend you reach out to sup

[Learn More](#)

### Quecmanager download

This device uses the Quectel RM-520N-AA modem module. Is it possible to put QuecManager on it? If so, what do I download or do I need to compile it specific to my hardware ...

[Learn More](#)

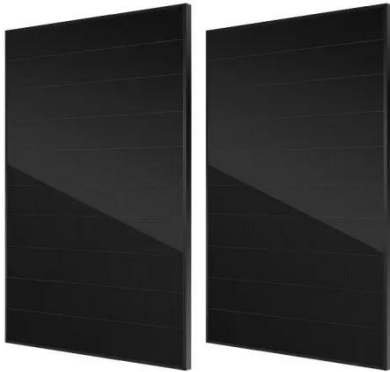


### Qualcomm 5G Modem Log Guide and Reference

suppliers or customer-designated servers. Quectel, strictly abiding by the relevant laws and regulations, shall retain, use, disclose or otherwise process

relevant data for the purpose of ...

[Learn More](#)



### 5G modules: Overview , Quectel

5G modules connect IoT devices to the cutting edge of cellular networks, with ultra-high data rates and ultra-low latency - enabling applications as diverse as remote surgery, autonomous driving, virtual ...

[Learn More](#)



### Quectel RM500Q-GL

Quectel RM500Q-GL is a 5G module optimized specially for IoT/eMBB applications. Adopting the 3GPP Release 15 LTE technology, it supports both 5G NSA and SA modes.

[Learn More](#)

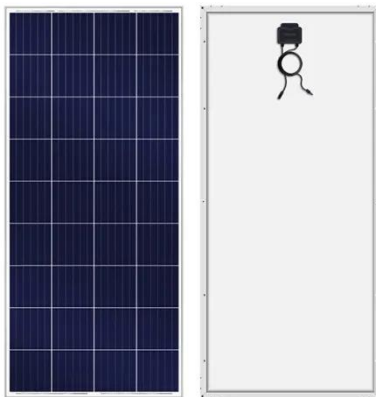
### Which Quectel modems have eSIM / eUICC functionality

Quectel need to clarify the e-SIM support situation for their modems The information available on which Quectel models support e-SIM, is very vague.

[Learn More](#)



Display screen  
Linux operation system  
quad-core processors  
smooth and stable system



### Quectel , End-to-end IoT solutions provider

Browse our vast range of cellular, GNSS, and Wi-Fi modules by technology, form factor and region. Find the ideal antenna for your IoT project - view by technology, placement and mounting type. Our EVB ...

[Learn More](#)

### Quectel launches RG660QA and RG660QB advanced 5G modules

Designed for versatility, this module series supports a broad array of next-generation 5G use cases, from home and business wireless broadband to mobile video, camera applications, and ...

[Learn More](#)

114KWh ESS



### LC29H -DA and BS module configuration and latest

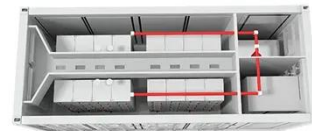
I'm very excited to test those modules LC29H DA and BS in order to make a rover - base configuration.

[Learn More](#)

---

### 5G sub-6GHz M.2 module Quectel RM502Q-GL

Quectel RM502Q-GL is a 5G module optimized specially for IoT/eMBB applications. Adopting the 3GPP Release 15 LTE technology, it supports both 5G NSA and SA modes.

[Learn More](#)

---

### Quectel 5G Module (RM502Q-AE)

An industrial grade 5G module for IoT/eMBB applications, supporting both 5G NSA and SA modes. Compatible with Quectel's M.2 LTE-A module and provides global coverage across major carriers.

[Learn More](#)

---

### Latest Firmware Version for Quectel RM520N-GL

I am currently using the Quectel RM520N-GL modem and am experiencing issues with registering to the 5G network. I have tried various configurations,

including setting the rat\_acq\_order ...

[Learn More](#)



### Quectel\_5G& LTE-Advanced\_Module\_Product\_Overview\_V6.9

Frequency from 600 MHz to 40 GHz can be supported by 5G Network. It's recommended to use ES2 as working samples for customer tests. This preliminary spec will have further updates. Typical 5G ODU ...

[Learn More](#)

### Quectel\_5G& LTE-Advanced\_Module\_Product\_Overview\_V7

Frequency from 600 MHz to 40 GHz can be supported by 5G Network. MIMO (Multi-In Multi-Out) technology applied to both base station and end device guarantees both enhanced throughput rate ...

[Learn More](#)



### How to get Driver & Tools

Dear all, This topic is intended to introduce how to get Drivers and Tools. I hope this will be helpful to you. Thank



you for your time. Much appreciate for your support of Quectel product~ For ...

[Learn More](#)

## Contact Us

---

For catalog requests, pricing, or partnerships, please visit:  
<https://www.v4venison.co.za>

