

Photovoltaic panel installation latitude requirements



Photovoltaic panel installation latitude requirements



Best Angle And Orientation For Solar Panels - Forbes Home

Typically, an ideal angle for your solar panels will be equal or close to the latitude of your home. However, proper solar panel angle will fluctuate over the course of the year. For summer

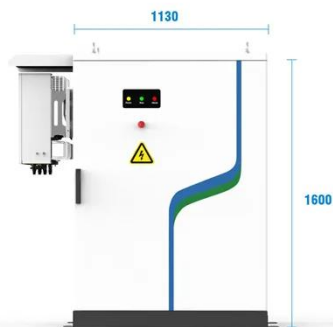
[Learn More](#)

Photovoltaic panel longitude and latitude requirements

For most homeowners, the ideal angle for a solar panel installation is close to or equal to the latitude of your home. This angle is typically between 30 degrees and 45 degrees.



[Learn More](#)



-  PV / DG Application
-  APP Intelligent Control
-  Multi-Unit Parallel Expansion
-  98.8% Max. Efficiency

Solar Panel Best Angle , Tilt & Orientation Guide 2025

In this guide, we'll break down the science behind the best solar panel angle, explain how to calculate it based on latitude, show seasonal adjustments, and share competitor-winning insights ...

[Learn More](#)

Solar Panel Direction & Orientation: 2025 Complete Guide

Latitude-Based Angle Calculation Provides Optimal Results: Setting your solar panel tilt angle equal to your location's latitude delivers the best year-round performance, with seasonal ...

[Learn More](#)



How to Find the Best Solar Panel Angle by Latitude

This latitude rule averages the sun's high summer path and low winter path, providing a balanced performance that yields the highest total kilowatt-hours annually. This tilt calculation is ...

[Learn More](#)

How to Determine the Best Solar Panel Angle by Location: A ...

The best solar panel angle by location is determined by factors such as geographic latitude, seasonal changes, and local climate conditions, which significantly influence sunlight ...



[Learn More](#)

Residential Solar Panel Requirements

When installing photovoltaic panels on one- and two-family homes, it's important to understand the requirements for access pathways and



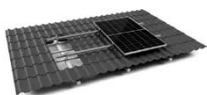
the requirements for setback from the ridge, ...

[Learn More](#)

Best Angle And Orientation For Solar Panels - Forbes Home

When planning the design and installation of a PV system, an important consideration is the position of the sun and the angle of solar radiation ...

[Learn More](#)



TILE ROOF SOLAR MOUNTING SYATEM



STANDING SEAM ROOF SYATEM



ADJUSTABLE TILT FLAT ROOF SYATEM



TRIANGLE FLAT ROOF SYATEM

The Best Angle for Solar Panel Installation

To achieve that goal, most solar panels face the equator and are installed at an angle between 30 to 45 degrees relative to the horizon. For homes in the northern hemisphere, solar ...

[Learn More](#)

Determining the Best Location for a PV System

When planning the design and installation of a PV system, an important consideration is the position of the sun and the angle of solar radiation with the

latitude and longitude coordinates of ...

[Learn More](#)



How to Find the Best Orientation and Angle of Solar Panels?

Ideally, the angle of your solar panels should be equal or close to the latitude of where they are installed. As you go further north or south, the angle of the sun in the sky decreases. To efficiently capture ...

[Learn More](#)

Contact Us

For catalog requests, pricing, or partnerships, please visit:
<https://www.v4venison.co.za>

