

Photovoltaic cps inverter



Overview

High energy density, flexible configuration, and an advanced energy management system (EMS) enables seamless transfer between grid-tied and off-grid modes. The single-phase hybrid inverter can be AC or DC coupled with an onsite PV array and has a generator input terminal allowing. Our Newest 3D Interactive Experience is Here! Get a detailed look at the newest addition to our growing family of 3-phase string inverters! Market leading solutions from a tough company you can count on. Our commitment is absolute customer focus for the life of the project. More than 8 gigawatts of 3-phase string inverters are installed in. CPS is excited to introduce the 7.

Photovoltaic cps inverter



CPS Inverters

30 per page 60 per page 120 per page
180 per page 300 per page 1 CPS
SCA50KTL-DO/US-480 > 50kW 480 VAC
3-Phase Grid-Tie Inverter for Commercial
Applications with Standard Wire-box Our
...

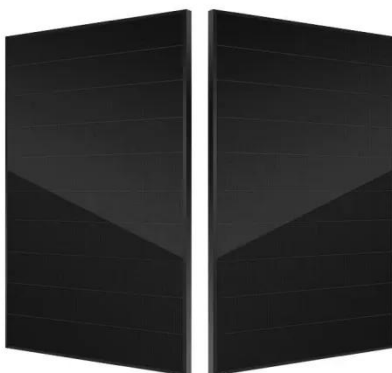
[Learn More](#)

CPS 25kW 480 VAC 3-Phase Grid-Tie Inverter for Commercial ...

High efficiency at 98.5% peak and 98.0% CEC, wide operating voltages, broad temperature ranges and a NEMA Type 4X enclosure enable this inverter platform to operate at high performance across ...



[Learn More](#)



CPS Series Photovoltaic Grid Connection Inverter

These inverters are factory configured with three MPPTs which are electrically divided into separate PV input zones: PV Input-1, PV Input-2, and PV Input-3. Each 5-string PV input zone operates as a ...

[Learn More](#)

Chint Power Systems

Our Newest 3D Interactive Experience is Here! Get a detailed look at the newest addition to our growing family of 3-phase string inverters! Market leading solutions from a tough company you can count on.

...

[Learn More](#)



CPS, ECH12KTL/US, 12kW 1Phase Commercial Hybrid String ...

CPS is excited to introduce the 7.6 kW, 9.6 kW, and 12 kW single-phase hybrid inverters to the North American market. The new Power Leaf solution includes a hybrid inverter that allows the connection ...

[Learn More](#)

250kW-600V String Inverter

The new CPS 250 kW-600 V three-phase string inverters are designed for ground mount applications. The units are high performance, advanced, and reliable inverters designed specifically for the North ...

[Learn More](#)



CPS ECH7.6-12K Datasheet 10-16-2024

CPS is excited to introduce the 7.6 kW, 9.6 kW, and 12 kW single-phase hybrid inverters to the North American market.

CE UN38.3 (MSDS)



The new Power Leaf solution includes a hybrid inverter that allows the connection ...

[Learn More](#)

3 Phase String

The 25kW-480V CPS three phase string inverters are designed for rooftop and carport PV applications. These compact units are high performance, advanced and reliable inverters designed specifically for ...

[Learn More](#)



Contact Us

For catalog requests, pricing, or partnerships, please visit:
<https://www.v4venison.co.za>

