

Maximum wind turbine blade length



Maximum wind turbine blade length



Wind Turbines: the Bigger, the Better

In 2023, the average rotor diameter of newly-installed wind turbines was over 133.8 meters (~438 feet)--longer than a football field, or about as tall as the Great Pyramid of Giza. Larger ...

[Learn More](#)

How Long Are Wind Turbine Blades: Size Specifications Guide

A: Typical wind turbine blades range from 40 to 80 meters (131 to 262 feet) in length. Larger offshore models can exceed 90 meters (295 feet), designed to capture more wind and ...



[Learn More](#)



How Long are Wind Turbine Blades: The Quick Guide to Their ...

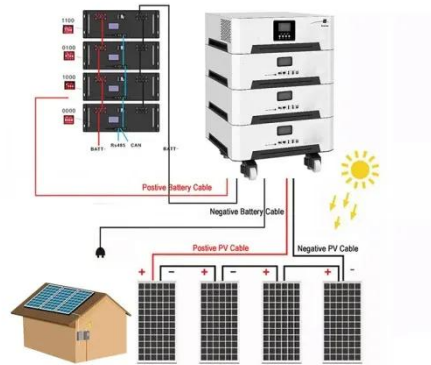
Wind energy has undergone a massive transformation, represented by the colossal blades propelling turbines into the future of renewable power. From modest beginnings with blades a ...

[Learn More](#)

How Is The Length Of A Wind Turbine Blades Determined

Turbines with longer blades can reach up to 107 meters, typically found in offshore wind farms. Onshore turbines usually produce less energy. Modern blades average 50-70 meters in ...

[Learn More](#)



How Long Is a Wind Turbine Blade? The Shocking Size of Modern Wind

The maximum length of a wind turbine blade currently stands at around 107 meters, but future designs could potentially reach up to 200 meters, considerably enhancing power generation ...

[Learn More](#)

How Long Are Wind Turbine Blades? Sizes, Materials & Trends

What is the practical maximum length for onshore wind turbine blades today? Most OEMs cap onshore blades around 85 m because of transport limits, though segmented solutions can ...

[Learn More](#)



How Long Are Wind Turbine Blades? Factors & Size Explained

Unpack the engineering, logistics, and environmental factors that determine wind turbine blade lengths, optimizing



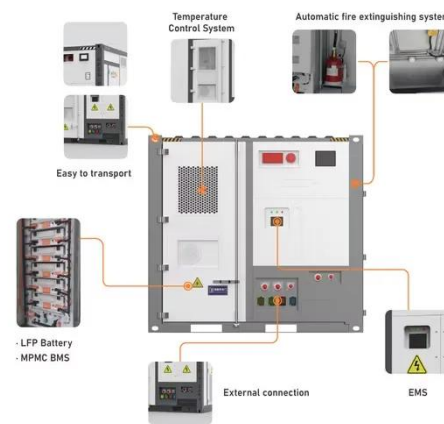
energy capture.

[Learn More](#)

How Long Are Wind Turbine Blades? Explore Impressive Dimensions

Did you know that the longest wind turbine blades now measure an astonishing 115.5 meters, nearly as tall as the Statue of Liberty? This impressive dimension is not just a feat of ...

[Learn More](#)



Wind Turbine Blade Size: How Big Are They and Why?

According to The United States Department of Energy, most modern land-based wind turbines have blades of over 170 feet (52 meters). This means that their total rotor diameter is longer ...

[Learn More](#)

How Long are Wind Turbine Blades?

Forty years ago, wind turbine blades were only 26 feet long and made of fiberglass and resin [3]. Today, blades can be 351 feet, longer than the height of the Statue of Liberty, and produce ...

[Learn More](#)



Contact Us

For catalog requests, pricing, or partnerships, please visit:
<https://www.v4venison.co.za>

