

I work on base station network communications



Overview

A base station connects your phone to the network. They provide the coverage you need for calls and data. The present-day tele-space is incomplete without the base stations as these constitute an important part of the modern-day scheme of wireless communications. It enables seamless communication by linking various wireless devices to broader networks, ensuring that data flows efficiently from one point to another. A base station is an integral. Base Station But what exactly is a base station, and how does it work in wireless communication networks?

This article explores the concept of base stations, their functions, and their significance in the telecommunications ecosystem.

I work on base station network communications



What Is a Base Station? Definition and How It Works

Define the central communication hubs of modern wireless technology. Learn how base stations manage capacity and ensure reliable connections.

[Learn More](#)

What Is the Role of a Base Station in Wireless Communication?

Base stations are critical components in wireless communication networks, serving as the intermediary between mobile devices and the core network. They play a vital role in ensuring ...



[Learn More](#)



What Is A Base Station?

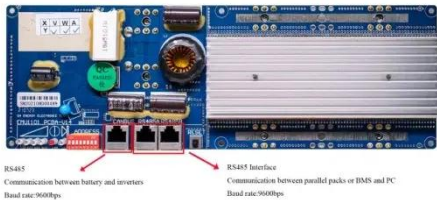
A base station is an integral component of wireless communication networks, serving as a central point that manages the transmission and reception of signals between cellular networks ...

[Learn More](#)

Base Station's Role in Wireless Communication Networks

A base station is a critical component of wireless communication networks. It serves as the central point of a network that connects various devices, such as smartphones, tablets, and computers.

[Learn More](#)



What is a Base Station in Telecommunications?

Discover the role and functionality of a base station in telecommunications networks. Learn how these critical components manage communication between mobile devices and the network, ensuring ...

[Learn More](#)

What is a Base Station? -- From Communication Core to Thermal ...

How Does a Base Station Work? A base station's operation can be summarized in three steps: wireless transmission, signal conversion, and network connection. First, the base station uses ...

[Learn More](#)

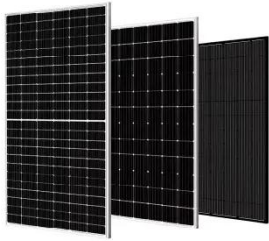


Base Stations

Base stations form a key part of modern wireless communication networks because they offer some crucial advantages, such as wide coverage,

continuous communications and an array of ...

[Learn More](#)



BS (Base Station)

Base stations are responsible for transmitting and receiving data to and from wireless devices, as well as managing network resources and ensuring reliable and efficient communication.

[Learn More](#)



What are Base Station in Telecommunications?

The Backbone of Wireless Networks A base station connects your phone to the network. It acts as a hub between mobile devices and the core system. Base stations form the backbone of ...

[Learn More](#)

Understanding Base Stations: The Backbone of Wireless ...

A base station is a fixed communication infrastructure that connects mobile devices (such as smartphones, tablets, or IoT devices) to a network, enabling

wireless communication.

[Learn More](#)



Contact Us

For catalog requests, pricing, or partnerships, please visit:
<https://www.v4venison.co.za>

