

How wide and long is a photovoltaic panel

 **TAX FREE**    

Product Model
HJ-ESS-215A(100KW/215KWh)
HJ-ESS-115A(50KW 115KWh)

Dimensions
1600*1280*2200mm
1600*1200*2000mm

Rated Battery Capacity
215KWH/115KWH

Battery Cooling Method
Air Cooled/Liquid Cooled



ENERGY STORAGE SYSTEM



Overview

The standard residential solar photovoltaic panel size you'll see most often is based on a 60-cell configuration, typically measuring about 67 inches long by 40 inches wide. This size offers the best balance between power output, handling ease, and fitting standard roof dimensions. " If you want to calculate how many solar panels you can put on your roof, you will obviously need to know the size of a solar panel. Example: 5kW solar system is comprised of.

Panel "Size" vs Physical Dimensions: The most critical distinction for homeowners is that solar panel "size" refers to electrical output (measured in watts), not physical measurements. 25 feet wide, which equates to around 15 square feet. That's roughly the size of a large coffee table or a very assertive flat-screen TV. For commercial setups, you're usually looking.

How wide and long is a photovoltaic panel



What Is Standard Solar Panel Size? A Comprehensive Overview

The standard solar panel size typically ranges from 65 inches by 39 inches for residential units, with most panels containing either 60 or 72 cells, which significantly affects installation capacity

...

[Learn More](#)

Standard Solar Panel Sizes And Wattages (100W-500W Dimensions)

The goal here is to get to the average solar panel size by wattage. You can find typical dimensions of 100W, 150W, 170W, 200W, 200W, 220W, 300W, 350W, 400W, and 500W solar panels summarized ...



[Learn More](#)

standard solar photovoltaic panel sizes explained

The standard residential solar photovoltaic panel size you'll see most often is based on a 60-cell configuration, typically measuring about 67 inches long by 40 inches wide. This size offers the ...

[Learn More](#)

How Big is a Solar Panel? The Solar

Panel Size Guide

For a residential solar panel, size is fairly consistent across manufacturers: 65 inches (1.65 meters) by 39 inches (1 meter) is the average solar panel size that you find on the roofs of houses. That is about ...

[Learn More](#)



Understanding Solar Panel Dimensions In 2025: A Complete Size Guide

Explore the most common solar panel dimensions in 2025, including residential and commercial sizes. Learn how solar panel size dimensions affect power, installation, and efficiency.

[Learn More](#)

What Is the Average Size of a Solar Panel? Quick Guide

Most standard solar panels are around 65 by 40 inches. That's just under 18 square feet per panel.

[Learn More](#)



How Big is a Solar Panel? A Guide to Solar Panel Dimensions

For residential solar panels, the panels measure an average of 65 inches (5.4 feet) by 39 inches (3.25 feet), covering

an area of 17.25 square feet. This measurement may vary slightly ...

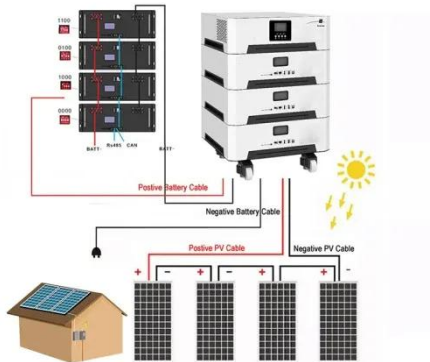
[Learn More](#)



Solar Panel Size & Dimensions Guide 2025 , Complete Specs

The most common residential solar panel measures approximately 65" × 39" × 1.5" (5.4 feet by 3.25 feet) and produces 350-450 watts. This is known as a 60-cell panel configuration.

[Learn More](#)



Detailed Guide to Solar Panel Size & Dimensions

Choosing the proper system is not only about the solar panel dimensions. You should also consider wattage, number of cells, layout possibilities, and energy consumption. Also, your ...

[Learn More](#)

The Ultimate Guide to Solar Panel Dimensions and Sizes

For example, a typical home solar panel may be around 1.7 meters long and 1 meter wide. The size of a solar panel directly connects to its wattage. Larger

panels usually have more ...

[Learn More](#)



Contact Us

For catalog requests, pricing, or partnerships, please visit:
<https://www.v4venison.co.za>

