

How to install double-glass single-sided photovoltaic panels



Overview

This comprehensive guide covers proper mounting height (0.5 meters for ground-mount), optimal array spacing to maximize rear-side irradiance, electrical configuration for increased current capacity, and site preparation for high-albedo surfaces. This guide contains information regarding the installation and safe handling of Solar-space photovoltaic module (hereafter is referred to as “module”). During Modules installation and routine maintenance, operators should follow all safety precautions in this manual and local regulations. Installers must read and understand this Guide prior to installation. Learn why bifacial solar technology boosts energy output by 25% compared to traditional systems, with real-world case studies and installation checklists.

How to install double-glass single-sided photovoltaic panels



Bifacial solar panels: What you need to know

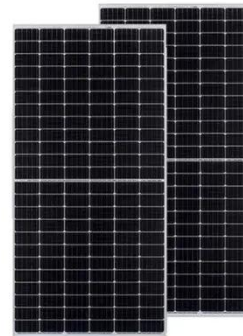
Bifacial panels are usually constructed with glass on both sides, enhancing durability against environmental factors such as wind and hail.

[Learn More](#)

UL Dual Glass and Bifacial module

Thanks for choosing SEG Solar Photovoltaic Modules (hereafter referred to as "PV Module"), This Guide is to give information on how to apply SEG Solar PV modules properly.

[Learn More](#)



How to Install Double-Sided Glass Photovoltaic Panels: Complete ...

Meta description: Discover step-by-step instructions for installing double-sided glass photovoltaic panels. Learn why bifacial solar technology boosts energy output by 25% compared to traditional systems, ...

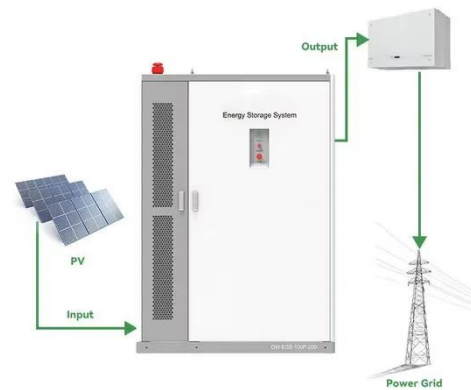
[Learn More](#)

Best Practices for Installing Bifacial

Solar Panels

Discover the benefits of bifacial solar panels and learn how to optimize their installation for maximum efficiency. This article covers different panel types and essential best practices, ...

[Learn More](#)



InstallationGuide for DASSOLAR DoubleGlassPhotovoltaicModule

Always keep the backsheet of the panel free from foreign objects or structural elements, which could come into contact with the panel, especially when the panel is under mechanical load.

[Learn More](#)

Solarspace Double Glass Photovoltaic Modules Installation Manual

This guide contains information regarding the installation and safe handling of Solar- space photovoltaic module (hereafter is referred to as "module"). During Modules installation and routine maintenance, ...

[Learn More](#)



Bifacial Solar Panel Installation Best Practices , Dual-Sided Solar

We'll explore real-world performance data, installation strategies, and the

specific conditions where bifacial panels deliver the best returns. [Image: Bifacial Solar Panel Cross-Section ...

[Learn More](#)



**2MW / 5MWh
Customizable**

A Comprehensive Guide to Bifacial Solar Panels

Bifacial solar panels produce solar power from both sides and deliver up to 30% more energy, but are they worth it? Let's find out.

[Learn More](#)



- 100KWH/215KWH
- LIQUID/AIR COOLING
- IP54/IP55
- BATTERY 6000 CYCLES

50KW modular power converter



Flexible Configuration

- Modular Design, Expanding as Required
- Small&Light, Wall Mounted
- Installed in Parallel for Expansion



Powerful Function

- Support PV+ESS
- Grid Support, Equipped with SVG Technology
- On-Grid and Off-Grid Operation



Reliable Protection

- Outdoor IP65 Design
- Sufficient Protection Functions Equipped

Bifacial Solar Panel Installation: A Quick Guide

However, proper installation and site selection are key to maximizing their performance. By following this guide and working with Solar Design Services, you can ensure seamless and ...

[Learn More](#)

Double-Side Glass Technology in PV Systems: Benefits, ...

Double side glass in PV systems boosts energy yield, enhances durability, and requires careful installation for optimal solar performance.

[Learn More](#)



Contact Us

For catalog requests, pricing, or partnerships, please visit:
<https://www.v4venison.co.za>

