

How much power does a 5g base station consume at night



How much power does a 5g base station consume at night



A technical look at 5G energy consumption and performance

By putting the base station into a sleep state when there is no traffic to serve i.e. switching off hardware components, it will consume less energy. The more components that are ...

[Learn More](#)

Energy Consumption of 5G, Wireless Systems and the Digital Ecosystem

"A 5G base station is generally expected to consume roughly three times as much power as a 4G base station. And more 5G base stations are needed to cover the same area," -IEEE Spectrum, 5G's ...

[Learn More](#)



Power consumption based on 5G communication

This paper proposes a power control algorithm based on energy efficiency, which combines cell breathing technology and base station sleep technology to reduce base station energy consumption ...

[Learn More](#)

What is the Power Consumption of a

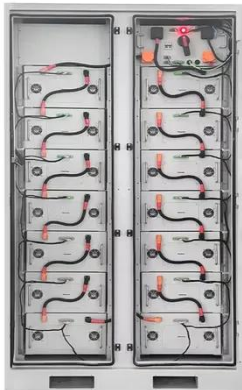
5G Base Station?

Ericsson has been able to innovate a 5G base station that consumes only 20% energy when the traffic is low compared to a normal setup. This achieves through advanced software ...

[Learn More](#)



To Strive forward No Energy Waste



- ✓ All in one
- ✓ 100~215kWh High-capacity
- ✓ Intelligent Integration

How much power does a 5G base station consume? It is rumored that

As the two leading companies in the construction of 5G base stations in China, Huawei and ZTE have previously announced the power consumption data of 5G equipment, and the results ...

[Learn More](#)

A technical look at 5G energy consumption and performance

Base Station Power Consumption
Energy Saving Features of 5G New Radio
How Much Energy Can We Save with Nr Sleep Modes?
Impact on Energy Efficiency and Performance in A Super Dense Urban Scenario
Further Reading
The 5G NR standard has been designed based on the knowledge of the typical traffic activity in radio networks as well as the need to support sleep states in radio network equipment. By putting the base station into a sleep state when there is no traffic to serve i.e. switching off hardware components, it will consume



less energy. The more component See more on ericsson Environmental Health Trust

Energy Consumption of 5G, Wireless Systems and the

...

"A 5G base station is generally expected to consume roughly three times as much power as a 4G base station. And more 5G base stations are needed to cover ...

[Learn More](#)



How much power does 5G consume?

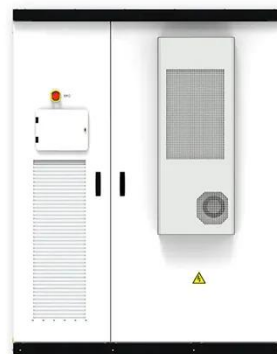
One 5G base station is estimated to consume about as much power as 73 households (6), and 3x as much as the previous generation of base stations (5), (7). When base stations, data centers and ...

[Learn More](#)

Energy consumption optimization of 5G base stations considering

An energy consumption optimization strategy of 5G base stations (BSs) considering variable threshold sleep mechanism (ECOS-BS) is proposed, which includes the initial matching ...

[Learn More](#)



What is 5G Energy Consumption?



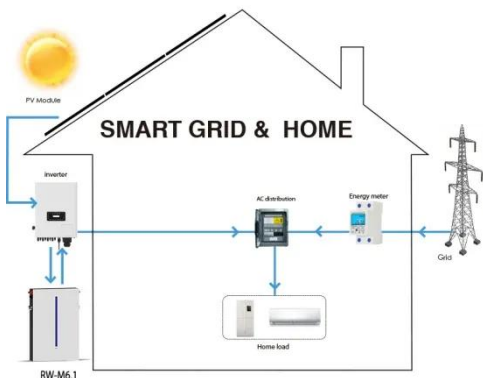
With 5G projected to increase capacity up to approximately 1000-fold and high frequency millimeter wave (mmWave) transmission driving exponentially higher cell density, this percentage could ...

[Learn More](#)

Base station 5G power consumption

The power consumption of a single 5G station is 2.5 to 3.5 times higher than that of a single 4G station. The main factor behind this increase in 5G power consumption is the high power usage of the active ...

[Learn More](#)



Why does 5g base station consume so much power and how to ...

In addition to other small modules that use electricity, the power consumption of a single 5G base station is generally around 3700 watts, which is about three times that of 4G and does not ...

[Learn More](#)

Contact Us

For catalog requests, pricing, or partnerships, please visit:
<https://www.v4venison.co.za>

