

How much land does the photovoltaic panel occupy



How much land does the photovoltaic panel occupy



How much land does a solar panel or photovoltaic panel ...

A novel method is developed within an integrated assessment model which links socioeconomic, energy, land and climate systems. At 25-80% penetration in the electricity mix of ...

[Learn More](#)

How Much Land Is Required for a 1 MW Solar Power Plant?

A 1 MW solar power plant typically requires 4 to 6 acres of land. The precise amount depends heavily on the efficiency of the solar panels used and the specific layout of the site. From ...

[Learn More](#)



How Much Land Does Renewable Energy Take Up

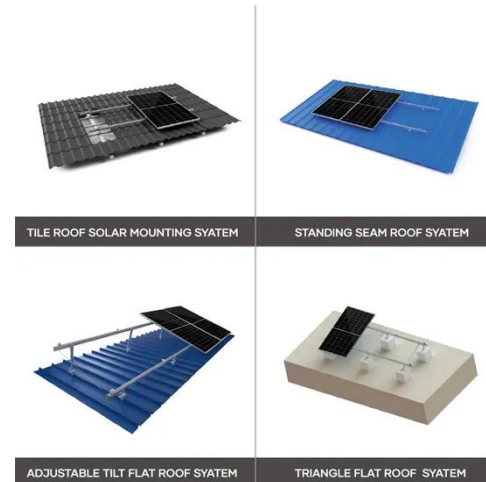
How Do Renewable Resources Impact The Land? The production of certain photovoltaic (PV) cells can lead to water contamination due to toxic substances. While renewable energy reduces ...

[Learn More](#)

Land Requirements for Utility-Scale PV:

The amount of land occupied by utility-scale PV plants has grown significantly, and will continue to-- raising valid concerns around land requirements and land-use impacts (such as taking ...

[Learn More](#)



How many acres does photovoltaic solar energy occupy?

Different geographical regions have varying sunlight availability, which also plays a significant role in determining how much land is utilized for solar panels to meet energy demands ...

[Learn More](#)

Assessing How Much Land Does Solar Power ...

Factors affecting how much land solar power needs include technology, efficiency, and location.

[Learn More](#)



Land Requirements for Utility-Scale PV: An Empirical Update ...

Unlike rooftop PV systems, which have limited or no land-use impacts by virtue of being mounted on existing structures, utility-scale PV plants are, by definition,



sited on the ground and in ...

[Learn More](#)

How Much Land Does A Solar Power Plant Need

The average land requirement for a solar farm is 4 to 6 acres per MW, which means a 10 MW solar farm would require 40 to 60 acres. The actual land requirement may vary depending on ...



[Learn More](#)



How Much Land For 1 Mw Solar Farm: A Quick ...

Discover how much land for 1 MW solar farm is required, factors influencing size, and maximizing efficiency in our comprehensive guide.

[Learn More](#)

How much land does a solar power plant require?

Utility scale solar power plants require a significant amount of land due to the number of solar panels required. Modern

plants require 5 to 15 acres per MW of capacity. Recent Concentrating Solar Power ...

[Learn More](#)



Contact Us

For catalog requests, pricing, or partnerships, please visit:
<https://www.v4venison.co.za>

