

How many volts does a four-cell lithium battery pack have



How many volts does a four-cell lithium battery pack have



The Complete Guide to Lithium-Ion Battery Voltage Charts

For a 12V lithium-ion battery (which is typically made up of 4 cells in series), 13.2V indicates a charge level of about 70-80%, which is generally considered good.

[Learn More](#)

How many cells in a 12v lifepo4 battery

Total Voltage and Charge Characteristics: When fully charged, each LiFePO₄ cell can reach up to 3.6 volts, bringing the total voltage of a series-connected 12V battery to about 14.4 volts.



[Learn More](#)



How many lithium cells for 12V?

When fully charged, these cells can reach approximately 3.6V to 3.7V. By connecting four cells in series, you achieve: This configuration is ideal for applications requiring a stable 12V output. ...

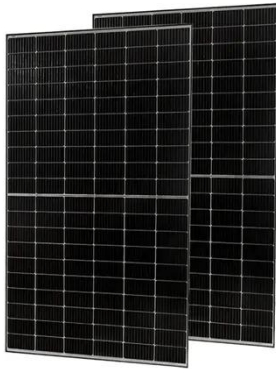
[Learn More](#)

lipo battery guide

For the 14.8V battery above, that means that there are four cells in series (which means the voltage gets added together). This is sometimes why you will hear people talk about a "4S" battery pack - it

...

[Learn More](#)



How to Calculate the Number of Cells in a Battery

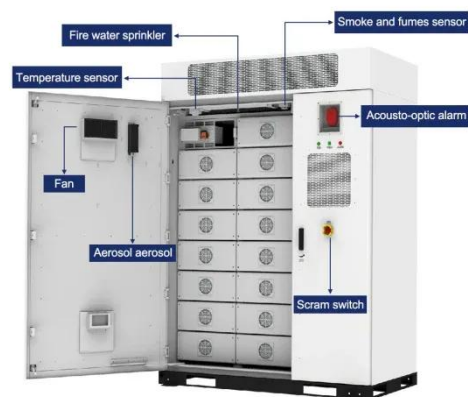
In general, most household items like flashlights and remote controls use AA or AAA batteries which have 1.5 volts and three or four cells respectively. Car batteries have 12 volts and ...

[Learn More](#)

4S LiPo Battery Voltage Explained: Full Guide

Nominal Voltage: Each cell in a Lipo battery typically has a nominal voltage of 3.7 volts. Hence, a 4S (4-cell) Lipo battery will have a nominal voltage of 14.8 volts ($3.7V \times 4$).

[Learn More](#)



Battery Pack Calculator , Good Calculators

Use it to know the voltage, capacity, energy, and maximum discharge current of your battery packs, whether series- or parallel-connected. Using the battery

pack calculator: Just complete the fields ...

[Learn More](#)



How Many Cells in a Lithium Battery Pack? A Complete Guide to 12V ...

Most commonly, a 12V lithium battery pack is made up of four lithium-ion cells, each with a nominal voltage of 3.7V. This configuration allows the pack to reach a total nominal voltage of ...



[Learn More](#)

4S LiPo Battery Voltage: Full, Nominal, Storage, Cutoff

A 4S LiPo battery is a lithium polymer battery made up of four cells connected in series. Each cell has a nominal voltage of 3.7V, so the nominal voltage for the entire pack is 14.8V.

[Learn More](#)



LiFePO4 Battery Voltage Chart 12V 24V 36V 48V Guide

LiFePO4 (lithium iron phosphate) batteries offer reliable, stable power with a unique voltage profile that sets them

apart from traditional batteries. Here's what you need to know about their basics and ...

[Learn More](#)



Contact Us

For catalog requests, pricing, or partnerships, please visit:
<https://www.v4venison.co.za>

