

How big is a single-phase inverter



How big is a single-phase inverter



How to Determine the Right Inverter Sizes for Your Needs

Choosing the correct inverter sizes is crucial. Discover how to calculate your power needs, understand the consequences of improper sizing, and find the perfect VoltX inverter.

[Learn More](#)

Single-Phase Inverters

Inverters are crucial components in power electronics because they transform DC input voltage to AC output voltage. Talking about single-phase inverters, these convert a DC input source into a single ...



[Learn More](#)

Size of inverter for solar power

Single unit size of inverter for solar power below 1kW, suitable for household photovoltaic power plants below 10kW in North America. The required size of inverter for solar power can be ...



[Learn More](#)

The Only Inverter Size Chart You'll Ever Need

We have created a comprehensive inverter size chart to help you select the correct inverter to power your appliances.

[Learn More](#)



SolarEdge Single Phase Inverters



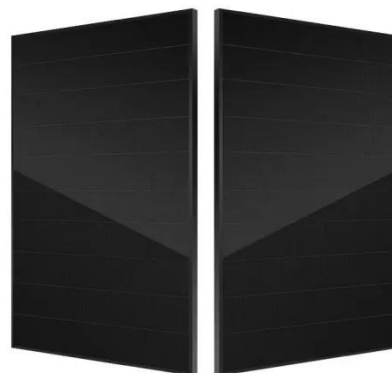
contact SolarEdge support. A higher current source may be used; the inverter will limit its in. t current to the values stated. Revenue grade inverter P/N: SExxxxA-US000NNR2 (for 7. 0W inverter:SE7600A ...

[Learn More](#)

Complete Solar Inverter Sizing Guide

Get it right and your system runs smoothly for years. In this guide, you'll learn what size solar inverter you need, how to size an inverter for solar systems step by step, how panel output ...

[Learn More](#)



Understanding the Maximum Inverter Size for Single Phase Systems

The maximum size of a single phase hybrid inverter is determined by grid capacity and household electrical load.

For most homes, single-phase inverters range from 3 kilowatts to 10 kilowatts.

[Learn More](#)



What Size Inverter Do I Need?

Finding the proper inverter size for your needs is as simple as adding together the necessary wattages of the items that you're looking to power.

[Learn More](#)



How To Size A Solar Inverter in 3 Easy Steps

In this guide, we share 3 easy steps on how to size a solar inverter correctly. We explain the key concepts that determine solar inverter sizing including your power needs, the type and number of ...

[Learn More](#)

A Beginner Guide to Single Phase PV Inverter , CHINT global

Most inverters will range from as little as 50 watts all the way up to around 11,000 watts for residential use. When purchasing an inverter for your solar

panel system, you need to also ...

[Learn More](#)



Contact Us

For catalog requests, pricing, or partnerships, please visit:
<https://www.v4venison.co.za>

