

How big is a rural solar panel



Overview

On average, 60 cell solar panels are 65 inches (1. Example: 5kW solar system is comprised of 50 100-watt solar panels. Alright, your roof square footage is 1000 sq ft. Can you put a 5kW solar system on your roof?

For that, you will need to know what size is a typical 100-watt solar panel, right?

To bridge that gap of very useful knowledge needed. The most common residential solar panel measures approximately 65" × 39" × 1. 25 feet) and produces 350-450 watts. This guide breaks it down simply. We'll cover how sizes work, common types, and what fits your space. 65m) and 79 inches (2m), their width is between 39 and 41 inches (around 1m). For commercial setups, you're usually looking.

How big is a rural solar panel



How Big Is a Solar Panel? Understanding Solar Panel Size and Weight

Residential solar panels, known for their 60-cell configuration, typically measure about 5.4 feet by 3.25 feet. In contrast, commercial solar panels, with their 72-cell setup, extend slightly longer, ...

[Learn More](#)

How Large is One Solar Panel? Key Factors and Calculations

Standard 60-cell modules measure approximately 39 inches by 66 inches, while 72-cell modules are around 39 inches by 77 inches. Recognizing these sizes is essential for determining ...

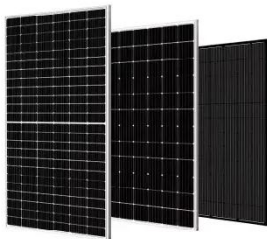
[Learn More](#)



Solar Panel Size: 2026 Detailed Guide

Commercial solar panels are designed for large-scale energy production for factories, solar parks, institutions, and other businesses. Typically, a commercial solar panel is 6.5 x 3.2 feet ...

[Learn More](#)



Solar Panel Size & Dimensions

Guide 2025 , Complete Specs

In this comprehensive guide, you'll learn everything you need to know about solar panel sizing, from standard dimensions to weight considerations, helping you determine the perfect solar ...

[Learn More](#)



Nominal Capacity

230Ah

Nominal Energy

50kW/100kWh

IP Grade

IP54



How Big Is A Solar Panel? A Guide To The Different

In general, the length of residential solar panels is usually between 65 inches (1.65m) and 79 inches (2m), their width is between 39 and 41 inches (around 1m). The area of a residential solar ...

[Learn More](#)

Understanding Solar Panel Dimensions In 2025: A Complete Size Guide

Understanding solar panel dimensions is crucial for planning your solar system installation, maximizing efficiency, and ensuring compatibility with your available space. In this blog, ...

[Learn More](#)



The Complete Guide to Solar Panel Size: What You Need to Know

Learn how to choose the right solar panel size for your home or business. Our guide covers dimensions, cell

counts, and efficiency.

[Learn More](#)



Standard Solar Panel Sizes And Wattages (100W-500W Dimensions)

The goal here is to get to the average solar panel size by wattage. You can find typical dimensions of 100W, 150W, 170W, 200W, 200W, 220W, 300W, 350W, 400W, and 500W solar panels summarized ...

[Learn More](#)



standard solar photovoltaic panel sizes explained

Discover standard solar photovoltaic panel sizes. Choose the perfect fit for your installation with our expert guide. Learn more today!

[Learn More](#)

What Is the Average Size of a Solar Panel? Quick Guide

Most standard solar panels are around 65 by 40 inches. That's just under 18 square feet per panel.

[Learn More](#)



Contact Us

For catalog requests, pricing, or partnerships, please visit:
<https://www.v4venison.co.za>

