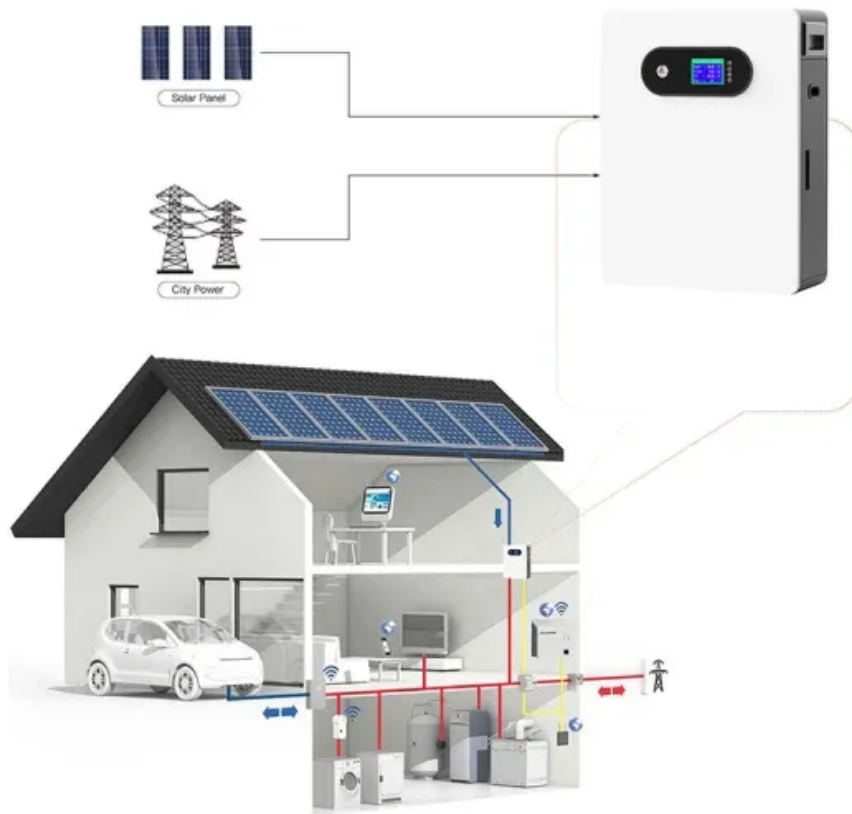


Generator inlet and outlet air temperature measurement points



Overview

Without any adjustments, repeat the readings at 30 minute intervals until there is stability in the difference of three readings of the alternator's air inlet and air outlet temperatures. Shut down the alternator as quickly as is practicable and measure all winding. Air cooled unit draws cooling air from different ends of the unit to cool the system, dependent upon the units cooling system design. Factors such as climate and direction of prevailing winds must be. Cooling systems are designed to provide adequate cooling for full load operation at a specified ambient air temperature typically between 40C° (104F°) and 50C° (122F°). The radiator is one of the primary means of regulating temperature, in essence functioning as a heat exchanger rate, they become hotter, as does the engine coolant. In this case, the generator set can continue to operate at full load with an outside air temperature of nearly.

Generator inlet and outlet air temperature measurement points



DESIGN GUIDELINES

Use Generac's Power Design Pro7 gas pipe sizing module to determine the minimum recommended pipe size for the selected generator's gas flow given the anticipated length of the pipe run between ...

[Learn More](#)

Examples of Airflows for Different Enclosed Generator Applicatio

When discharging air vertically, because the generator is surrounded on all sides, can result in higher than ambient air temperatures being pushed into inlet vents.

[Learn More](#)



Generator room air inlet and exhaust parameters

As the air travels from the rear of the enclosure, it picks up heat from the alternator discharge, exhaust manifold, turbo and exhaust pipework, and from heat radiated from the cylinder block

[Learn More](#)

Generator Enclosure Spacing

In this white paper, CFD has been utilized to look at the influences of walls near generator enclosures as well as the influence of prevailing winds.

[Learn More](#)



Ambient temperature vs. air on core (AOC) temperature

This paper aims at differentiating between the ambient temperature vs. air-on-core (AOC) method of rating the performance of a cooling system used on a generator set.

[Learn More](#)

Air-cooled generator inlet temperature

Download scientific diagram , Temperature profile of ambient air, ACC inlet, and TES from publication: Improving Air-Cooled Condenser Performance in Combined Cycle Power Plants ,

[Learn More](#)

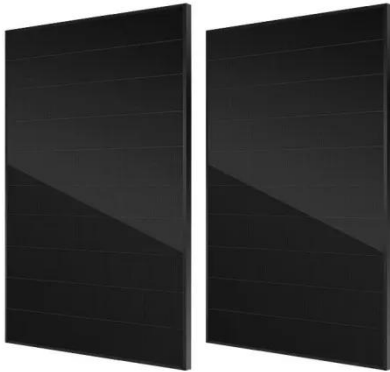


Design of Air Inlet and Exhaust Route in Diesel ...

When designing the air intake and exhaust of diesel generator room, we should pay attention to the matters

which mentions in this article.

[Learn More](#)



GENERIC GENERATOR INSTALLATION MANUAL

Check with the generator's manufacturer to determine the optimal cooling method for the system. Factors such as climate and direction of prevailing winds must be considered in an outdoor installation.

[Learn More](#)



6mw generator outlet temperature regulations

IEC 61010-1 standard allows determining the maximum temperature levels by measuring the temperature rise under reference test conditions and adding this rise to 40°C or

[Learn More](#)

Contact Us

For catalog requests, pricing, or partnerships, please visit:
<https://www.v4venison.co.za>

