

Front and rear column photovoltaic panels



Overview

If we try to describe in a few words the structure, we could say that a photovoltaic panel is composed by a series of photovoltaic cells protected by a glass on the front and a plastic material on the rear. The whole of it is vacuum encapsulated in a polymer as transparent as possible. Solar panels are not a single functional element, but modules composed of multiple structural units. While power rating and efficiency are often the most. To effectively differentiate between the front and back of solar back panels, one must consider several significant characteristics. Identification of the glossy surface, typically facing the sun, serves as the primary feature on the panel's front; 2. Rails: Rails are long, horizontal structures attached to the solar panels using clamps.

Front and rear column photovoltaic panels



The structure of a photovoltaic module

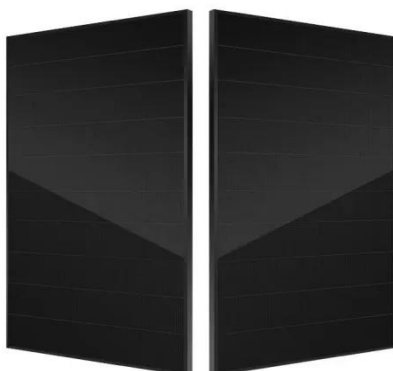
If we try to describe in a few words the structure, we could say that a photovoltaic panel is composed by a series of photovoltaic cells protected by a glass on the front and a plastic material on the rear.

[Learn More](#)

How to install the front and rear columns of photovoltaic panels

The five main steps to installing a solar panel system include an engineering site visit, permits and documentation, ordering equipment, the solar panel installation, and

[Learn More](#)



How to Calculate the Distance Between the Front and Rear of Solar

To calculate the distance between the front and rear of solar photovoltaic panels, you'll need to consider several factors, including the dimensions of the panels, the tilt angle of the panels, ...

[Learn More](#)

Photovoltaic Panel Front and Rear

Columns: The Backbone of Solar ...

Ever wondered what keeps those gleaming photovoltaic panels at the perfect 34° angle during a hurricane? Meet the unsung heroes - front and rear columns that form the skeleton of every solar ...

[Learn More](#)



Front and rear columns of photovoltaic bracket

It is an independent foundation set under the front and rear fixed columns of the photovoltaic bracket. Concrete is poured on site, and embedded steel plates or embedded bolts are poured into it.

[Learn More](#)

What Are the Main Components of Solar Panels? A Structural ...

What components make up a solar panel? This article explains the six key structural components--from front glass and solar cells to encapsulation materials, backsheet, frame and ...

[Learn More](#)



Photovoltaic panel installation front and rear columns

Photovoltaic panel installation front and rear columns Our innovative solar module racking structures are designed

to install quickly and provide secure mounting for modules from nearly all manufacturers.

[Learn More](#)



Photovoltaic System Foundations: Key Factors for Optimal Selection

A reinforced concrete strip foundation is a type of foundation where beams are set between the front and rear columns of the photovoltaic (PV) mount. This arrangement shifts the ...

[Learn More](#)



18650^{3.7V}
Li-ion
RECHARGEABLE BATTERY
2000mAh



How to distinguish the front and back of solar back panels

Each solar panel typically comprises a front layer that captures sunlight, while the back layer secures the wiring system. Recognizing these elements is crucial for efficient installation and ...

[Learn More](#)

Contact Us

For catalog requests, pricing, or partnerships, please visit:
<https://www.v4venison.co.za>

