

Fixed Installation Scheme for Base Station User Cabinets



Overview

In this comprehensive guide, we will explore the importance of protecting communication cabinets and racks, with a focus on various installation methods and advanced locking mechanisms. Remote Radio Unit (RRU): Converts signals to radio frequencies for transmission. Failure to avoid the hazards may have serious consequences. Indicates an imminently hazardous situation (high risk) which, if not avoided, will result in death or. The most popular type of Wireless Base Station deployment (cell site) consists of a Base Transceiver Station (BTS) located in close proximity to the antenna tower. For construction applications, where machine and site positioning operations using GNSS will be carried out over a long time (weeks, months, or years), ensure that you carefully choose the base station location. DECT Base Another name for BS3x0 Station TDM-DECT Another name for BS3x2.

Fixed Installation Scheme for Base Station User Cabinets



Base Station Cabinets and Subracks (Including The BBU Subrack)

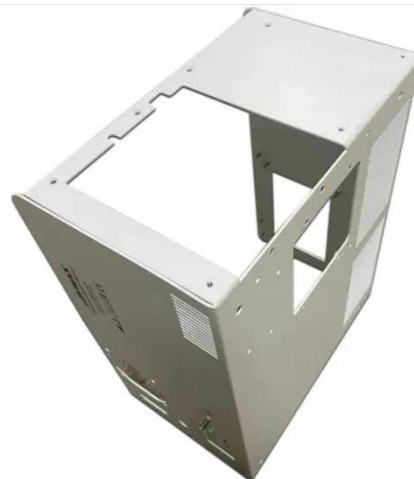
Base Station Cabinets and Subracks (Including the BBU Subrack) Configuration (SRAN12.1_02).pdf - Free download as PDF File (.pdf), Text File (.txt) or read online for free.

[Learn More](#)

Gateway and Base Station Installation Guide

Installation Planning Gateways, Base Stations, and the antennas. Failure to follow the information in this guide can result in incorrect installation, poor s

[Learn More](#)



GSM transceiver base station (BTS) installation and commissioning ...

The structure of the frame must have firm ladders or diagonal angles that can be climbed, which is conducive to antenna installation, feeder deployment, commissioning, maintenance, access and ...

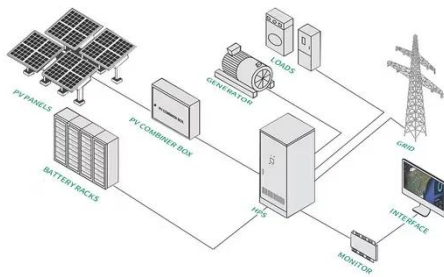
[Learn More](#)

BTS Structure, Installation,

Operation & Maintenance ...

Five basic Base Station architectures are in use today: 1. Legacy architecture, ...

[Learn More](#)



Common ways to set up a base station

Use of a T-Bar setup ensures that the base station is set up with exactly the same position and height every day. This helps eliminate the errors typically associated with daily tripod setup. For example, ...

[Learn More](#)

Installation and fixation of communication cabinets and racks, regular

In this comprehensive guide, we will explore the importance of protecting communication cabinets and racks, with a focus on various installation methods and advanced locking mechanisms.

[Learn More](#)



BTS Structure, Installation, Operation & Maintenance Guide (EEE)



Five basic Base Station architectures are in use today: 1. Legacy architecture, with all of the equipment located inside the BTS hut, with a coax connection to the top of the tower and a fiber/copper ...

[Learn More](#)

Alcatel-Lucent CDMA Base Station 8420 Indoor Cabinet ...

This chapter provides general instructions for anchor installation and cabinet handling, as well as cabinet placement, anchoring and grounding. Included are instructions for all indoor cabinets, including the ...



[Learn More](#)

Complete Guide to 5G Base Station Construction , Key Steps, ...

Explore how 5G base stations are built--from site planning and cabinet installation to power systems and cooling solutions. Learn the essential components, technologies, and challenges ...



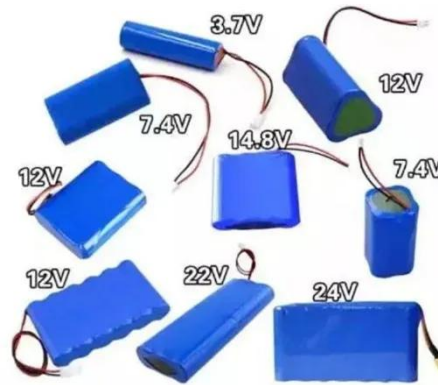
[Learn More](#)

Base Station, Installation Guide

This document describes how to install the Base Station. The document is intended for service technicians. For

information on how to operate the device, see the applicable Installation and ...

[Learn More](#)



Process of Installing a Base Transceiver Station (BTS)

Installing a Base Transceiver Station (BTS) is a critical step in building mobile communication networks. Here's a step-by-step guide to the process:

[Learn More](#)

Contact Us

For catalog requests, pricing, or partnerships, please visit:
<https://www.v4venison.co.za>

