

Electrical construction of communication base station



Overview

The baseband processor converts signals to digital form. A duplexer lets one antenna transmit and receive at once. A control unit manages power, channels, and timing. A base station represents an access point for a wireless device to communicate within its coverage area. Base stations typically have a transceiver, capable of sending and receiving. A typical communication base station combines a cabinet and a pole. Definition and Basic Functions of a Base Station What is.

Electrical construction of communication base station



28W Linear T8 Fluorescent Tube, 3500K, 120-277 VAC

Fusion T8 fluorescent lamps provide the efficiency of fluorescent technology in recessed, surface mounted and specialty fixtures. The 24,000 + hour lifetime of these lamps far outlast all standard ...

[Learn More](#)

Mobile Communication Base Stations

Base station construction requires the coordination of multiple resources and is hindered by difficult site selection and stringent compliance requirements, resulting in long construction cycles and high costs.



[Learn More](#)



Complete Guide to 5G Base Station Construction , Key Steps, ...

Explore how 5G base stations are built--from site planning and cabinet installation to power systems and cooling solutions. Learn the essential components, technologies, and challenges ...

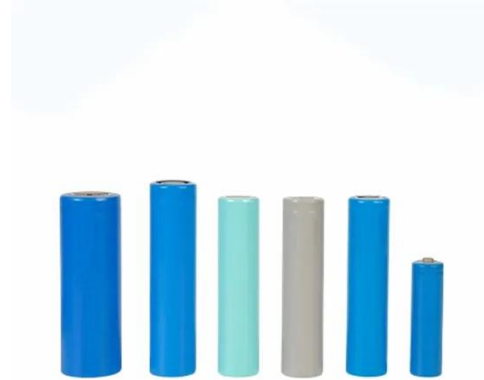
[Learn More](#)

What are Base Station in

Telecommunications?

Base stations contain several key parts. The antenna sends and receives radio energy. The transceiver handles signal modulation. The baseband processor converts signals to digital form. ...

[Learn More](#)



Molded Case Circuit Breaker, 3-Pole, 600A, 600 VAC

SENTRON 3VA molded case circuit breakers (MCCBs): One system well-conceived, modular, and highly variable with comprehensive range of accessory components with more than 500 elements. ...

[Learn More](#)

How to Set Up a Base Station CB System: A Complete Installation Guide

Setting up a base station CB system opens a world of communication possibilities far beyond what mobile installations offer. With careful planning, quality components, and proper ...

[Learn More](#)



Base Stations

The present-day tele-space is incomplete without the base stations as these constitute an important part of the

modern-day scheme of wireless communications. They are referred to as cell ...

[Learn More](#)



Communication Base Station Site Planning Based on Improved ...

In this paper, we reduce redundancy in urban weak coverage data. Initially, existing data is preprocessed and weak coverage points near existing base stations are removed to avoid ...

[Learn More](#)



Home Energy Storage (Stackble system)



Product Introduction

- Scalable from 10 kWh to 50 kWh
- Self-Consumption Optimization
- Integrated with inverter to avoid the compatibility problem
- LFP battery, safest and long cycle life
- Stackable design, effortless installation
- Capable of High-Powered Emergency-Backup and Off-Grid Function

Base Station System Structure

It describes the structure of base station systems with a convergent top-down and bottom-up framework. The BSWG has now moved beyond detailed consideration of these specific contributions.

[Learn More](#)

Connector 2-Port 3/0 to 800 MCM Front Entry

Bolt-on type lugs for Milbank stud type meter mounting devices are made of 6061-T6 aluminum to provide high strength and high conductivity. All lugs

are tinplated to ensure low contact resistance ...

[Learn More](#)



Placement Tool

Free delivery on all orders over \$40
Home / Tools, Testers, & Metering /
Power Tools / Drill & Driver Bits / Bit
Accessories / Placement Tool

[Learn More](#)

Base Station Design for Wireless Communications Engineers

The journey towards a smarter, more efficient network starts with innovative base station design today. This comprehensive guide underscores the evolving role of wireless communications engineers in ...

[Learn More](#)



Understand Cellphone Basestation Technology » Electronics Notes

Understand the major elements within a cellphone or mobile phone base station, what each element does and how the

technology is evolving to provide more flexible operation & better performance.

[Learn More](#)



What is a Base Station? -- From Communication Core to Thermal ...

This article will guide you to a deeper understanding of a base station's composition and working principles, with a special focus on the impact of heat on base station performance and how ...

[Learn More](#)



Electrical Conduit, Ducts & Strut Systems

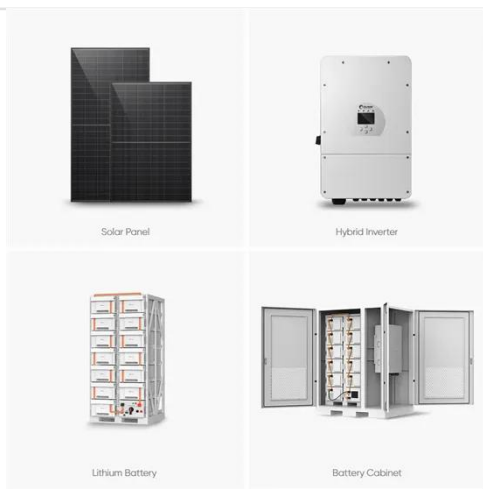
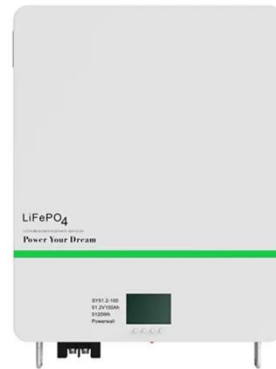
Shop electrical conduit, ducts, material handling, and strut accessories for residential, commercial, and industrial projects. Quality products, fast shipping!

[Learn More](#)

Wire, Cord & Cable - Building, Ground, Service & More

Shop electrical wire, cord, and cable--building wire, service wire, ground wire, and direct burial options for pros.

[Learn More](#)



4" Chase Nipple, Die-Cast Zinc

The WI L-710 4" Chase Nipple is a 4-inch rigid conduit nipple made from die cast zinc. It features a male threaded connection and is designed for concrete-tight installations when taped. This product meets ...

[Learn More](#)

7' Q-Series Patch Cord, CAT6, Booted, Gray

Q-Series patch cords are a perfect solution for when cost and speed of delivery are top priority. Designed to perform to TIA-568.2-D standards.



[Learn More](#)

The 2026 NEC: 39 revisions, updates, and new codes to look out for

FAQ: What if a nameplate isn't available? An assumed load of 7,200 VA should be used if the nameplate isn't available. 26.



Article 625.4 Qualified Persons New code: Only qualified ...

[Learn More](#)

Contact Us

For catalog requests, pricing, or partnerships, please visit:
<https://www.v4venison.co.za>

