

# Communication base station wind power on the roof

 **TAX FREE**    

## ENERGY STORAGE SYSTEM

**Product Model**  
HJ-ESS-215A(100KW/215KWh)  
HJ-ESS-115A(50KW 115KWh)

**Dimensions**  
1600\*1280\*2200mm  
1600\*1200\*2000mm

**Rated Battery Capacity**  
215KWH/115KWH

**Battery Cooling Method**  
Air Cooled/Liquid Cooled



The image shows a tall, grey Energy Storage System (ESS) unit with a black top and bottom. It features two vertical green stripes on the front panel. In the center, there is a blue hexagonal shape with a black lightning bolt symbol. The letters 'ESS' are printed in green in the upper right corner of the panel. At the bottom, there are two yellow triangular warning symbols with lightning bolts.



## Overview

---

The invention provides a communication base station, which is used for realizing the further height hanging of a communication antenna so as to enlarge the network coverage range, simultaneously solving the communication of the land and offshore wind power and reducing the. The invention provides a communication base station, which is used for realizing the further height hanging of a communication antenna so as to enlarge the network coverage range, simultaneously solving the communication of the land and offshore wind power and reducing the. The wind-solar-diesel hybrid power supply system of the communication base station is composed of a wind turbine, a solar cell module, an integrated controller for hybrid energy. The presentation will give attention to the requirements on using. Abstract: Due to dramatic increase in power. A hybrid energy system integrates multiple energy sources—typically combining solar energy, wind power, and diesel generators or battery storage. By using a mix of renewable energy and conventional sources, hybrid systems balance the cost-efficiency of renewables with the reliability of traditional. As shown in Figure S3 each user accesses a base station, and the BS then allocates a channel to each new user when there is remaining channel capacity. If all of the channel capacity of a BS is occupied, a user cannot access this BS and must instead access another BS that is farther away. This reduces emissions, aligns with sustainability goals, and even opens up opportunities for carbon credits or green.

## Communication base station wind power on the roof

---



### CN111836120A

The invention relates to the technical field of communication, in particular to a communication base station.

[Learn More](#)

---

### New base station for wind power communication

Our study introduces a communications and power coordination planning (CPCP) model that encompasses both distributed energy resources and base stations to improve communication quality ...

[Learn More](#)



---

### The connection between communication base station and ...

Discover how hybrid energy systems, combining solar, wind, and battery storage, are transforming telecom base station power, reducing costs, and boosting sustainability.

[Learn More](#)

---

### Wind power construction of



## communication base stations

We investigate the use of wind turbine-mounted base stations (WTBSs) as a cost-effective solution for regions with high wind energy potential, since it could replace or even outperform

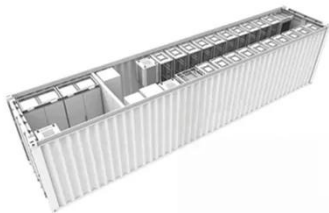
[Learn More](#)



 TAX FREE

1-3MWh

BESS



## Wind power level of communication base station

This large-capacity, modular outdoor base station seamlessly integrates photovoltaic, wind power, and energy storage to provide a stable DC48V power supply and optical distribution.

[Learn More](#)

## Establishing communication base station wind power on the roof

Unfortunately, in the recent years some cases of degradation on certain telecommunication systems have arisen due to the presence of wind farms, and expensive and technically complex corrective ...

[Learn More](#)



## Near and far points of wind power for communication base ...

We investigate the use of wind turbine-mounted base stations (WTBSs) as a cost-effective solution for regions with

high wind energy potential, since it could replace or even outperform

[Learn More](#)



---

### **Nordic rooftop communication base station wind and solar ...**

Discover how hybrid energy systems, combining solar, wind, and battery storage, are transforming telecom base station power, reducing costs, and boosting sustainability.

[Learn More](#)



---

### **Wind-solar hybrid for outdoor communication base stations**

The invention relates to a wind and solar hybrid generation system for a communication base station based on dual direct-current bus control, comprising photovoltaic arrays, a wind-power

[Learn More](#)



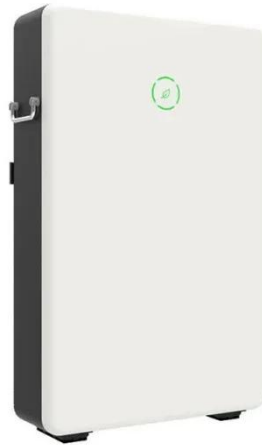
---

### **The Role of Hybrid Energy Systems in Powering Telecom Base Stations**

Hybrid energy solutions enable telecom base stations to run primarily on renewable energy sources, like solar and

wind, with the diesel generator as a last resort. This reduces ...

[Learn More](#)



---

## Contact Us

---

For catalog requests, pricing, or partnerships, please visit:  
<https://www.v4venison.co.za>

