

Can speakers be placed in lockers



Overview

It is possible to place speakers inside a cabinet, but it can affect the sound quality. The enclosed space may cause sound distortion and impact the overall audio performance. By adhering to the rules for positioning speakers effectively, you can elevate your listening experience and immerse yourself in the richness of every note and sound. My question to you; can I get a good pair of bookshelf speakers that won't lose sound quality by being inside the cabinet with a mesh screen instead of a cabinet door.

Can speakers be placed in lockers



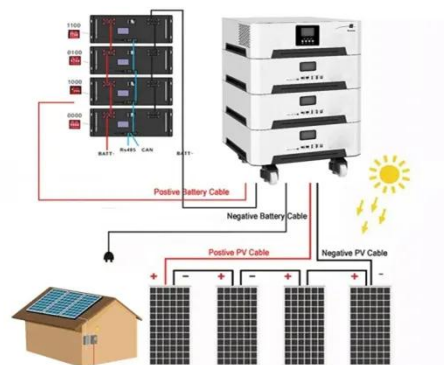
Where to Place Speakers in a Small Room for GREAT Sound?

There are a few general rules when you are placing your speakers for optimum sound. Let us look at some of these factors here. It may seem obvious, but placing objects right in front of ...

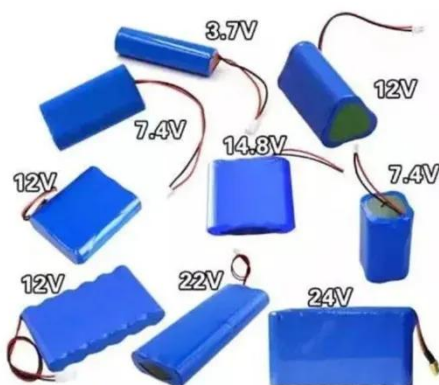
[Learn More](#)

8 Tips for the Best Surround Sound Speaker Placement in 2025

We will cover eight crucial strategies, from establishing the foundational front stage to mastering advanced techniques for Dolby Atmos and multi-seat optimization. You will learn precise, ...



[Learn More](#)



How to position your speakers for great sound - U-Turn Audio

Try to get about 4 feet of separation for bookshelf speakers or 8 feet for floorstanding speakers. If your speakers are too close, sounds will blend together and become muddy.

[Learn More](#)

Unlock the Sound: Discover the Rules for Placing Speakers in a ...

Ideally, you should place speakers at least a few feet away from cabinet walls to prevent sound reflections and interference. The exact distance can vary based on the size of the room, the

...

[Learn More](#)



Speaker Placement Guide for Best Sound (1 to 11 Speakers)

Ideally, speakers should be placed on a softer surface to attenuate the frequencies that can reverberate poorly. Even if you don't have enough physical room for your setup, this will allow you to minimize ...

[Learn More](#)

Most Common Speaker Placement Mistakes

Learn the most common speaker placement mistakes and how to fix them. Small adjustments can dramatically improve your sound quality for free.

[Learn More](#)



How to position speakers for excellent sound - Stereopolis

Optimal speaker placement is crucial for achieving great, high-quality stereo sound in any room. Each room has

unique acoustic characteristics, such as size, shape, materials, and furniture.

[Learn More](#)



Where to Place Speakers in a Small Room for GREAT Sound?

Ideally, speakers should be placed on a softer surface to attenuate the frequencies that can reverberate poorly. Even if you don't have enough physical room for ...

[Learn More](#)



Speakers inside cabinet

But it's a bad idea to put speakers in a cabinet. You are sort of double boxing which will mess with the bass and it normally radically changes the sound of the speaker.

[Learn More](#)

Where To Put Speakers In A Room?

Proper speaker placement can dramatically enhance your listening experience, but it's often a process of trial and error. Each room is unique, and the "best" placement for speakers can ...

[Learn More](#)



9 Common Speaker Placement Mistakes (and How to Avoid Them)

To avoid this mistake, aim to place your speakers on stable and level surfaces, such as speaker stands or dedicated speaker shelves. This will help minimize vibrations and improve the ...

[Learn More](#)

Contact Us

For catalog requests, pricing, or partnerships, please visit:
<https://www.v4venison.co.za>

