

Can photovoltaic panels be connected to 22v lights



Overview

This practical guide walks you through connecting standard 220V home lighting systems to solar power - no engineering degree required. Discover why over 68% of homeowners now consider solar integration essential for modern living. Solar panels can be directly connected to LED lights through a straightforward setup that optimizes efficiency and performance, 2. The connection requires an appropriate wiring system to ensure seamless power transfer, 3. Most common solar panels include 32 cells, 36 cells, 48 cells, 60 cells, 72 cells, or 96 cells. The system classification (12V, 24V, 48V). Light bulbs are responsible for a large portion of the electricity bill at home.

Can photovoltaic panels be connected to 22v lights



Solar Panel Voltage Explained: Output & Regulation Guide

Solar panels are made of many PV cells wired together. Each cell produces about 0.5-0.6 volts. A 36-cell panel = around 18-22V (used in 12V systems). A 72-cell panel = around ...

[Learn More](#)

Can Solar Panels Be Directly Connected to Lights?

Solar panels can be directly connected to lights, but the setup often requires the inclusion of additional components to ensure proper functionality. Here are the key components typically ...



[Learn More](#)



Can Solar Panels Power LED Lights? Everything ...

Discover if solar panels can power LED lights and learn everything you need to know about this sustainable energy source.

[Learn More](#)

How to Connect 220V Home Lights to Solar Power: A Step-by-Step ...

This practical guide walks you through connecting standard 220V home lighting systems to solar power - no engineering degree required. Discover why over 68% of homeowners now consider solar ...

[Learn More](#)



Solar Panel Output Voltage

The article discusses the complexities of understanding solar panel output voltage and related technical terms. It explains the various types of voltage measurements, such as nominal voltage, open-circuit ...

[Learn More](#)

How can solar panels be directly connected to LED lights

To directly connect solar panels to LED lights, several components play a critical role in ensuring a successful setup. The primary components include solar panels, wiring, connectors, and ...

[Learn More](#)



 LFP 280Ah C&I

How to Connect a Solar Panel to a Battery and ...

Learn how to connect a solar panel to a battery light in this full guide. We go over the most efficient way with detail.

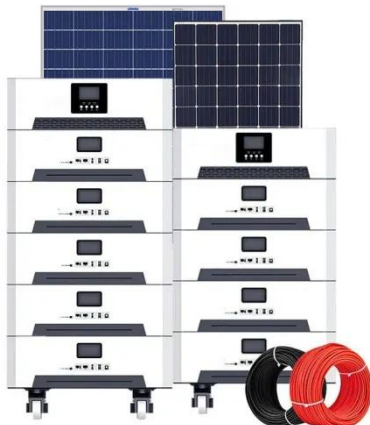
[Learn More](#)

How to Connect Solar Panels to Light Bulbs (Top Tips)

Therefore, you can connect solar panels to light bulbs through alternating current (AC) to prevent them from being counted in your monthly utility bill. The good thing about this process is that ...

[Learn More](#)

48V 100Ah



Solar Panel Output Voltage: How Many Volts Do PV Panel Produce?

To be more accurate, a typical open circuit voltage of a solar cell is 0.58 volts (at 77°F or 25°C). All the PV cells in all solar panels have the same 0.58V voltage. Because we connect them in series, the ...

[Learn More](#)

Solar Panel And Light: Lighting Explained

These systems can be equipped with sensors that adjust lighting based on ambient light levels or motion detection,

ensuring optimal energy use.
Additionally, smart solar lights can be
controlled remotely, ...

[Learn More](#)



Contact Us

For catalog requests, pricing, or partnerships, please visit:
<https://www.v4venison.co.za>

