

Can lithium battery high voltage inverter be used



Can lithium battery high voltage inverter be used



How to Choose the Right Inverter for a Lithium Battery System

Learn how to select the right inverter for lithium battery systems, covering LiFePO4 compatibility, sizing, safety, solar integration, and long-term performance use.

[Learn More](#)

Can Lithium Batteries Work With Any Type of Inverter?

The short answer is no - proper inverter matching is crucial for optimal performance and safety. Let's examine the key compatibility factors for lithium battery and LiFePO4 battery systems.



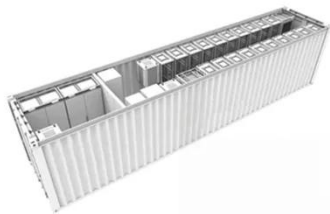
[Learn More](#)



 TAX FREE

1-3MWh

BESS



Which inverter is best for lithium batteries?

Q1: Can I use any inverter with lithium batteries? A1: No, pure sine wave inverters are recommended to ensure clean power and protect lithium batteries and connected devices.

[Learn More](#)

Is It Safe to Use an Inverter with a Lithium Battery? Key

Lithium batteries have revolutionized energy storage with their high efficiency, longer lifespan, and compact design. But when paired with inverters--devices that convert DC power to AC--safety ...

[Learn More](#)



- LiFePO₄
- Wide temp: -20°C to 55°C
- Easy to expand
- Floor mount&wall mount
- Intelligent BMS
- Cycle Life: ≥6000
- Warranty :10 years



Best Inverter Solutions for Lithium Batteries: Reliable Options for

Understanding how to pair an inverter with a lithium battery is essential for safe, efficient, and scalable power. This guide highlights top inverters and compatible lithium battery systems that ...

[Learn More](#)

Compatibility Analysis Between Lithium Batteries and Inverters & GSL

Ensuring compatibility between lithium batteries and inverters involves multi-dimensional coordination across electrical parameters, communication, and environmental conditions.

[Learn More](#)



Importance of Compatibility Between Inverter and Lithium Battery

Inverters that are not designed to work



with lithium batteries may overcharge or undercharge the battery, leading to premature degradation. Ensuring compatibility means that the ...

[Learn More](#)

The Ultimate Guide to Matching Your Lithium Battery and Inverter

Input Voltage Range: This is a hard rule. The inverter's voltage must match the battery system's nominal voltage. 12V, 24V, 48V--they have to be the same. You can't run a 12V battery on ...



[Learn More](#)

Can all inverters use lithium batteries?

Not all inverters are designed to work with lithium batteries, so it's essential to ensure that your chosen inverter can support this type of battery. The first thing you need to check is the ...

[Learn More](#)

Can I Connect Inverter to Lithium Battery?

Yes, you can connect an inverter to a lithium battery. Lithium batteries, particularly Lithium Iron Phosphate (LiFePO4) batteries, are well-suited for

use with inverters due to their high ...

[Learn More](#)



Contact Us

For catalog requests, pricing, or partnerships, please visit:
<https://www.v4venison.co.za>

