

# Calculation formula table for greenhouse photovoltaic bracket



## Overview

---

Calculation formula table of photovoltaic bracket drawings The total amount of power produced by a solar module is measured in watts (W). Power (measured in Watts) is calculated by multiplying the voltage (V) of the module by the current. Photovoltaic modules are. Modern solar racking requires battling: Here's the formula I've used on 1,200+ installations (and no, I'm not just making this up):  $\text{Total Material Required} = (\text{System Weight} \times \text{Safety Factor}) + (\text{Wind Load} \times \text{Area Coefficient}) + (\text{Snow Load} \times \text{Roof Pitch Modifier})$  Let's compare two 10kW systems: . determines the number of modules to be purchased. It calculates the system's AC electrical output as a array of 8,760 hourly AC power values over one y \*),but. determines the number of modules to be purchased. Photovoltaic modules are usually pr at STC (C5) by the peak sun hours at design tilt. It allows homeowners,small building owners,installers and manufacturers to easily develop estimate of the performance of potential PV installations.

## Calculation formula table for greenhouse photovoltaic bracket

---



### Photovoltaic bracket model calculation formula table

Flexible photovoltaic (PV) support structures are limited by the structural system, their tilt angle is generally small, and the effect of various factors on the wind load of flexibly

[Learn More](#)

### Load calculation formula for photovoltaic bracket

Adjustable features enable optimization of solar panel tilt angles for maximum energy generation, while structural calculations ensure adequate load-bearing capacity to withstand ...



[Learn More](#)



### Photovoltaic Bracket Calculations: The Engineer's Cheat Code for ...

While the calculation formula for photovoltaic brackets provides a solid foundation, the best installers know when to trust the numbers and when to listen to their gut.

[Learn More](#)

### Photovoltaic bracket aperture calculation formula table

This paper presents a new approach to computing the optimal tilt angle for photovoltaic (PV) panels. The influence of cloudy conditions on the tilt angle is explored.

[Learn More](#)



### Photovoltaic Bracket Diameter Reduction: Calculation Formulas, ...

As solar installations face increasingly complex environmental challenges, engineers are reevaluating fundamental design parameters - particularly bracket diameter specifications.

[Learn More](#)

### Photovoltaic bracket cost estimation formula table

The use of finer time periods, time-series, seasonal and autoregressive models could also check for lagged effects or if solar PV pricing varies at time frames less than a year, provided sufficient data ...

[Learn More](#)



### Calculation formula table of photovoltaic bracket drawings

Part II covers some specific calculations and their formulas and has examples of how to do such calculations. The



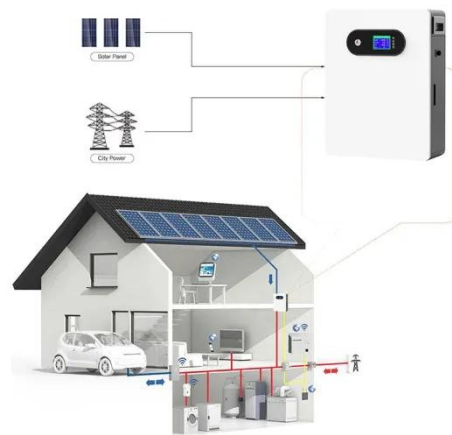
Appendix contains a set of charts, graphs, and other helpful tables and

[Learn More](#)

## Photovoltaic bracket strength calculation formula

Photovoltaic bracket strength calculation formula Do photo vo. panels are installed parallel to the roof surface How do. you calculate the number of photovoltaic modules? Multiplying the number of ...

[Learn More](#)



## The Nerd's Guide to Photovoltaic Bracket Material Calculations (With

But here's the dirty secret: getting your PV racking math right could mean the difference between a 25-year cash cow and a very expensive origami project. This guide will show you exactly how to ...

[Learn More](#)

## Photovoltaic bracket bandwidth calculation formula table

Let us explore fractional bandwidth calculator which performs calculation as per absolute BW and fractional



bandwidth formula including center frequency with UWB example.

[Learn More](#)



---

## Contact Us

For catalog requests, pricing, or partnerships, please visit:  
<https://www.v4venison.co.za>

