

BMS and soc battery



Overview

The major task of a battery management system (BMS) is to provide security and longevity of the battery, while also optimizing battery performance. Accurate SOC estimation is critical not only for user experience (e., reliable range prediction in electric vehicles) but also. The State of Charge (SOC) and the State of Health (SOH) are two critical factors in the world of rechargeable batteries that are extremely important in determining the performance and longevity of the battery. You may want to better understand the State-of-Charge $\{ \text{SoC} \}$ and. Battery management systems (BMS) are crucial in modern energy storage solutions, particularly in electric vehicles, renewable energy storage systems, and consumer electronics.

BMS and soc battery



Battery State of Charge Explained + SoC Algorithm Setup Example

We used the algorithm for calculating the state of charge of Li-ion batteries, executing it with the L9963 14 Cells BMC IC Evaluation Board and a 4-cell pack for 18650 batteries. Besides the ...

[Learn More](#)

What are SOC and SOH of a battery, how to measure them?

State-of-health $\{ (SoH) \}$ and State-of-Charge $\{ (SoC) \}$ are key quality indicators as they provide very useful data needed for the optimization of the Battery ...



[Learn More](#)



Complete Guide to BMS: Monitoring, Safety Protections, SOC & SOH ...

In this guide, we'll break down how a BMS works, what makes it essential, and how it improves battery safety and performance. Let's begin with the basics. ? What Is a BMS (Battery ...

[Learn More](#)

How BMS Controls State of Charge (SoC) and Safety

A fundamental aspect of BMS functionality is controlling the state of charge (SoC) and ensuring safety. This article explores these two critical functions and how they work together to ...

[Learn More](#)



BU-908: Battery Management System (BMS)

Capacity is the primary indicator of battery state-of-health (SoH) and should be part of the battery management system (BMS). Knowing SoC and SoH provides state-of-function (SoF), the ...

[Learn More](#)

Designing a Battery Management System (BMS) for Enhanced SOC ...

Discover how to design an efficient Battery Management System (BMS) that accurately monitors State of Charge (SOC) and State of Health (SOH). Learn about key components like AFE, ...

[Learn More](#)



State of Charge (SOC) Estimation Methods: A Practical Guide for ...

Discover the 5 most effective State of Charge (SOC) estimation techniques--from Coulomb counting to AI-driven models--and learn how to choose



the right method for your battery ...

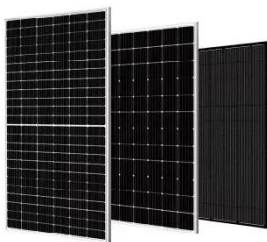
[Learn More](#)

Battery management system: SoC and SoH Estimation Solutions

The major task of a battery management system (BMS) is to provide security and longevity of the battery, while also optimizing battery performance. This can be done through ...



[Learn More](#)



What Are SOC and SOH in Battery Management Systems?

SOC indicates the current charge level, while SOH reflects the overall condition and capacity of the battery. What do SOC and SOH mean in battery management systems? State of ...

[Learn More](#)

The Importance of State of Charge (SOC) and State of Health ...

State of Charge (SOC) and State of Health (SOH) are crucial factors in the management of rechargeable batteries. The Battery Management System (BMS)

ensures the safe, effective, and ideal operation of ...

[Learn More](#)



Contact Us

For catalog requests, pricing, or partnerships, please visit:
<https://www.v4venison.co.za>

