

At what wind level will wind turbines stop working



Overview

The wind turbine will shut down when the average wind speed reaches a certain value, typically 25 m/s. Anything in excess of 25 m/s (90 km/hr) is dangerous for the wind turbine, so it opts to shut down. We will explain everything you should know. You are not the first person to ask why you have sometimes seen a number of wind turbines stopped and you will not be the last. In fact, [At What Speed Is The Wind Turbine Stopped So That Damage Does Not Occur?](#)

Wind turbines are stopped at speeds exceeding 55 miles per hour to prevent damage and ensure safe operation in extreme conditions. If the blades turn too fast, it can cause the entire structure to become unstable and then disintegrate. This helps. While designed to harness wind energy efficiently, there's a critical threshold where operators must pull the emergency brake.

At what wind level will wind turbines stop working



Why Do Wind Turbines Stop At High Speeds?

Wind turbines require specific wind speeds to operate efficiently, with a minimum of about 9 mph for operation and around 5 mph for optimal energy production. When wind speeds ...

[Learn More](#)

At what speed do windmills shut down?

When the anemometer registers wind speeds higher than 55 mph (cut-out speed varies by turbine), it triggers the wind turbine to automatically shut off. Do they turn off wind turbines when it's windy? The ...



[Learn More](#)



At what wind speed do wind turbines shut down?

In December 2011, a wind turbine exploded during a storm, triggering claims that turbines cannot cope with extreme weather. When wind speeds reach 88 kilometers per hour, turbine blades are twisted ...

[Learn More](#)

Why Do Wind Turbines Stop?

To prevent damage, wind turbines are stopped at speeds exceeding 55 miles per hour. This helps safeguard vital components and guarantee safe operation in extreme conditions. By ...

[Learn More](#)



At What Speed Is the Wind Turbine Stopped to Prevent Damage?

To prevent damage, wind turbines are stopped at speeds exceeding 55 miles per hour. This helps safeguard vital components and guarantee safe operation in extreme conditions. By ...

[Learn More](#)

What Speed Of Wind Shuts Down Turbine?

When wind speeds exceed this threshold, the turbine's braking system will activate. The three wind speeds that affect turbine power production are cut-in, cut-out, and rated wind speeds. ...

[Learn More](#)



Wind Turbine Shutdown: Quick Troubleshooting Guide

A wind turbine shutdown is an automatic safety process that stops the turbine from operating when wind speeds exceed a specific limit. This threshold is

called the cut-out speed, ...

[Learn More](#)

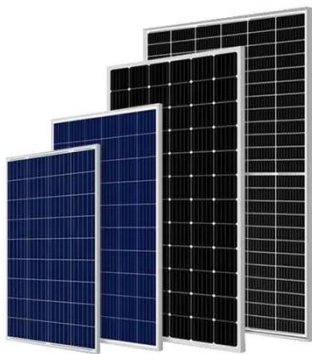


Why Do Some Wind Turbines Not Turn

Wind turbines need minimum wind speeds to generate power. Large-scale turbines start producing electricity at wind speeds between 3-4 meters per second (6.7-9 mph), which experts call ...



[Learn More](#)



Why Do Wind Turbines Stop?

If the wind speed continues to increase, all wind turbines have a maximum wind speed above which they cannot operate. This is called the turbine's 'furling speed'.

[Learn More](#)

At What Wind Speed Do Wind Turbines Shut Down? Critical ...

Modern wind turbines aren't your grandma's windmills - they're precision-engineered power plants dancing with atmospheric forces. While designed to

harness wind energy efficiently, ...

[Learn More](#)



✓ IP65/IP55 OUTDOOR CABINET

✓ OUTDOOR MODULE CABINET

✓ OUTDOOR 5G BASE STATION CABINET

✓ WATERPROOF

Why are there wind turbines stopped if there is wind

But the strange this is that, even though this might sound like a contradiction, too much wind also causes wind turbines to stop. Anything in excess of 25 m/s (90 km/hr) is dangerous for the ...

[Learn More](#)

Contact Us

For catalog requests, pricing, or partnerships, please visit:
<https://www.v4venison.co.za>

