

Acceptance of hidden photovoltaic support works



Overview

Solar panels installed on a historic property in a location that cannot be seen from the ground will generally meet the Secretary of the Interior's Standards for Rehabilitation. But. The Solar America Communities program is designed to increase the use and integration of solar energy in communities across the United States. It answers the main research question “How can planners and developers mitigate the risk of halting or delaying PV solar farm projects by increasing community acceptance?”

” using the theory of Choice Architecture while analyzing actors by. Right from the name, 'Hidden Solar Panels,' you get exactly what it says on the tin - solar panels that aren't immediately visible but still suck up sun rays like a neat environmental ninja. As part of the “BIPV meets History” research project, this study aims to identify barriers, potentials, drivers.

Acceptance of hidden photovoltaic support works



Drivers and Barriers to the Public Acceptance of Floating Photovoltaics

The findings reveal that, while public acceptance of FPV remains positive, it is lower than that experienced by renewable energy systems in general. This disparity is mainly due to concerns surrounding the landscape ...

[Learn More](#)

ACCEPTANCE OF BUILDING INTEGRATED PHOTOVOLTAIC (BIPV) IN ...

Several criteria for the compatible use of BIPV systems in heritage context are proposed, also taking into account the perspective of architectural preservation, legislative framework, research projects, and the ...

[Learn More](#)

ESS



The Art of Concealing: Hidden Solar Panels

How do Hidden Solar Panels Work? You might be going, "Are these hide-and-seek solar panels just as good?" To put it simply, yes! While their locations and designs are inconspicuous, their operating principles remain ...



[Learn More](#)

Photovoltaic Support Acceptance Results Analysis: Why 1 in 3 Solar

Did you know that 34% of photovoltaic installations worldwide fail their first structural acceptance checks? Our analysis of 2024 solar farm inspection data reveals a troubling pattern - and it's not what most developers ...



[Learn More](#)



(Not) in my city: An explorative study on social acceptance of

Two studies were conducted to investigate the public's acceptance of photovoltaic (PV) installations on buildings in Freiburg i. Br. Germany. The first study found that PV module designs should be ...

[Learn More](#)

Solar Panels on Historic Properties

Solar panels installed on a historic property in a location that cannot be seen from the ground will generally meet the Secretary of the Interior's Standards for Rehabilitation. Conversely, an installation that ...



[Learn More](#)

Social acceptance of photovoltaic systems in heritage buildings and

Different from the usual design of



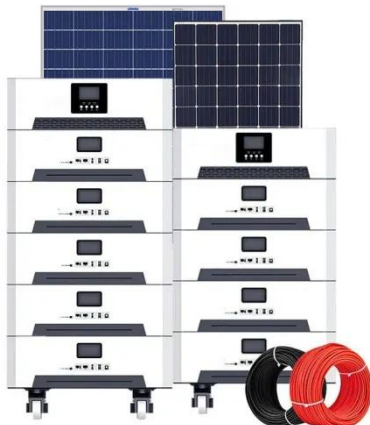
ground photovoltaic systems in farmlands or brownfields, a new framework is proposed, combining photovoltaic panels and vegetation.

[Learn More](#)

Social Acceptance of Integrated Photovoltaic Systems in Italian

This study investigates the social acceptance of integrated photovoltaic (IPV) systems in heritage and landscape contexts, focusing on Italian stakeholders in the construction sector.

[Learn More](#)



Increasing community acceptance of photovoltaic developments

Abstract cal planning process of big-scale photovoltaic power plants. It answers the main research question "How can planners and developers mitigate the risk of halting or delaying PV solar farm projects by ...

[Learn More](#)

Implementing Solar PV Projects on Historic Buildings and in Historic

Incentives for solar power technology implementation are being created and regulatory barriers removed.

Corporations and governments are focusing on solar power to demonstrate leadership in environmental ...

[Learn More](#)



Contact Us

For catalog requests, pricing, or partnerships, please visit:
<https://www.v4venison.co.za>

