

5G base station electromagnetic battery detector



5G base station electromagnetic battery detector



Human exposure to EMF from 5G base stations: analysis, evaluation

...

Performance of three different methodologies and equipment (broadband probes, spectrum analyzers, and drive test scanners), in the context of human exposure to electromagnetic

...

[Learn More](#)

Measurement of 5G base stations

Frequency-selective EMF measurement method can be used for extrapolation, supported by dedicated analysis software. Code-selective EMF measurement additionally shows cell ID, which can be used ...



[Learn More](#)



 **LFP 12V 100Ah**

How to detect whether the electromagnetic battery of 5g base

...

This page provides an overview of 5G measurements performed on User Equipment (UE) and Base Stations (BS) or Nodes B (NB). It details both 5G UE measurements and 5G BS measurements.

[Learn More](#)

Accurately assessing EMF exposure from 5G

This white paper provides information related to human exposure to radio frequency electromagnetic fields (RF EMF) from the base stations in the new 5G networks and describes how to accurately ...

[Learn More](#)



Comparison of Low-Cost 5G Electromagnetic Field Sensors

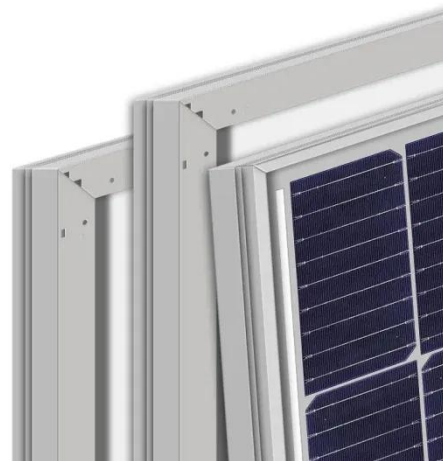
As such, a 5G NR base station is primarily installed to support various types of innovative projects but may also be used for exposure assessment experiments. This study compares two scenarios.

[Learn More](#)

Best EMF Detectors for 5G [2025]

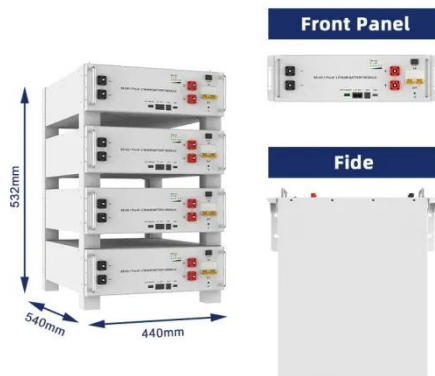
Choosing the best EMF detector for 5G depends on your needs and budget. For general EMF detection, the Trifield TF2 and GQ EMF-390 offer a great balance of features and ease of use.

[Learn More](#)



5G Base Station Electromagnetic Field Strength Estimation Method in

Recently, with the commercialization of



5G, a new electromagnetic field (EMF) evaluation methods is need. However, conventional EMF evaluation methods are only.

[Learn More](#)

The Measurement and Evaluation of the Electromagnetic ...

Through the detection of the surrounding electromagnetic environment before and after the construction of a 5G base station, the impact of 5G communication on the electromagnetic environment and the ...



[Learn More](#)



5G Base Station Deployment Review for RF Radiation

This paper discusses recent studies that measure and simulate EMF exposure from 5G base stations, comparing them to standards set by regulatory bodies like the ICNIRP and the FCC.

[Learn More](#)

IEC approves new 5G EMF exposure assessment methods standard for base

The new standard specifically focuses on test methods to achieve the most

accurate assessment of 5G base stations. It recommends using the 'actual maximum' transmission levels from ...

[Learn More](#)



Contact Us

For catalog requests, pricing, or partnerships, please visit:
<https://www.v4venison.co.za>

